

CORDIANT PROFESSIONAL TYRES ARE TESTED BY LEADING INTERNATIONAL INDEPENDENT EXPERTS

Global independent test centers: Automobil Test DEKRA (France), Applus IDIADA (Spain), DUK Test (Slovakia), VERSHINA TYRE TEST CENTER (Russia) carried out complex of tests with Cordiant Professional tyres on different rim seat diameters: 17.5, 19.5 and 22.5. Uninterrupted 24-hour tests of truck tyres on MAN trailers with fully loaded Schmitz-Cargobull and Verem semitrailers lasted for several months and confirmed high mileage comparable to the European competitors. All truck drivers mentioned good road grip, low wear rates and excellent self-cleaning.

As a result of testing (to conform the EU Directive 1222/2009) driving and trailing Cordiant Professional tyres scored mark B for braking on wet roads. This score is higher than lead competitors, according to the European labelling systems. Thus, if you use Cordiant Professional tyres in rainy weather, the brake path of the vehicle will be much shorter and transportation will be safer.



INNOVATIVE TECHNOLOGIES

The Cordiant Professional tyres use special technologies with number of advantages marking this brand among other competitors:

SMART-ENDURANCE TECHNOLOGY. Significantly increase the mileage of the tyres due to a special rubber compound with active carbon-polymer interaction centers. It strengthens bonds between soot and rubber and improves tyre durability.

STONE-SHIELD TECHNOLOGY protects tread from stones. A special sequence of unique three-dimensional stone extruders located within the grooves efficiently ensures the protection of tyre and breaker layers. The tread does not grab stones from dirt roads or irregular terrain, keeping the upper layers of the breaker undamaged.

The **STEEL-DEFENCE** technology reinforces the tyre through the use of special U-shaped structure of bead zone and rim wire made of high-tensile steel, thereby increasing tyre reliability in difficult conditions.

SAVE-COR Technology is a new rubber compound with an increased percentage of silica filler and new polymer types that reduce heat generation while driving. This is how Cordiant tires perform fuel efficiency.



SMART-ENDURANCE
A unique rubber blend with highly active black carbon
Increased durability, wear resistance, cut and split resistance. Lower tyre rolling resistance and fuel consumption.



STONE-SHIELD
3D geometry of circular grooves
3D geometry – a combination of geometrical lines creating sidewalls of grooves – is effective against stone penetration. This prevents linear cracking along the bottom of grooves, stones and foreign objects in the grooves, their further penetration into tread pattern under load, and breaker damage.



STEEL-DEFENSE
Strengthened bead construction
A new strengthened bead significantly increases reliability of tyres in bead zone and increases carrying capacity of a tyre.



DOUBLE TREAD
Bilayer construction of tread cap
Provides safety, reliability and cost efficiency in use. Prevents stone penetration into the rubber, the grooves of the bead cap.



FUEL ECONOMY
Fuel Efficiency
Increased fuel savings thanks to lower rolling resistance.



REGROOVABLE TIRE
Tread regrooving
Prolongs tyre life by up to 30 000 km.



TREAD DURABILITY INDICATOR
Tread durability indicator – a special rubber protuberance at the bottom of a groove
Control over residual pattern depth for safe use.



CONSTANT DEPTH SIPE
Knife sipes of equal depth
Knife sipes are made at half-depth of the tread pattern grooves without changing their section, which improves braking and tractive effort on wet and dry surface and provides tread pattern flexibility to increase comfort on the road.



TREAD BLOCK WITH VARIABLE PITCH
Tread blocks with variable pitch
Decrease noise level significantly and enjoy quiet and comfortable driving.



REINFORCED SIDE GUARD
Reinforced side construction
Protection of carcass from lateral damages of tyres from road kerbs and other obstacles in urban areas.



WINDING RING BEAD
Technology of bead ring wound of separate wire to reduce tension in bead zone
Longer tyre life. Easier balancing and rim fitting.

Tyre size	Model	Load index	Maximal speed (km/h)	Ply rate	Initial tread depth (mm)	Recommended rim size	Allowable rim size	Sector width (max. mm)	Static radius (mm)	Eurolabelling	Max. Load, kg (single, dual)	Corres. to max load: bar (kPa)
STEER-AXLE												
385/65R22.5	FR-1	158(160*)	120 (L), 110 (K)	20	15	22.5X11,75	22.5X12,25	405	493	D C 70	41,68(4250), 44,13(4500)*/-	8,5 (850), 9,0 (900)
385/55R22.5	FL-2	160 (158)	110 (K), 120 (L)	20	12,5	22,5x12,25	22,5x11,75	401	464	C B 70	44,13 (4500), 41,68 (4250)*/-	9,0 (900), 8,5 (850)*
315/80R22.5	FR-1	156/150, 154/150*	120 (L), 130 (M)*	20	15	22,5X9,00	22,5X9,75	318	500	D C 70	39,23(4000), 32,85(3350)/ 36,78(3750), 32,85(3350)*	9,0 (900)
315/70R22.5	FR-1	154/150, 152/148*	120 (L), 130 (M)*	18	15,5	22,5X9,00	22,5X9,75	318	500	D C 70	36,78(3750), 32,85(3350)/ 34,81(3550), 30,89(3150)*	9,0 (900)
315/70R22.5	FL-2	154/150, 152/148	120 (L), 130 (M)	18	15,5	22,5x9,00	22,5x9,75	318	470	C B 70	36,78(3750), 32,85(3350)/ 34,81(3550), 30,89(3150)*	9,0 (900)
315/60R22.5	FR-1	152/148	120 (L)	20	13,5	22,5X9,75	22,5X9,00	326	444	C B 69	34,81 (3550)/ 30,89 (3150)	9,0 (900)
295/80R22.5	FL-1	152/148	130(M)	16	15	22,5X9,00	22,5X8,25	310	490	D C 70	34,81 (3550)/30,89 (3150)	8,5 (850)
295/60R22.5	FL-1	150/147	120 (L)	18	13,5	22,5X9,00	22,5X9,75	304	420	C B 69	32,85(3350)/ 30,16(3075)	9,0 (900)
285/70R19.5	FR-1	145/143	130 (M)	16	14	19,5X8,25	19,5X7,50; 19,5X9,00	295	414	D C 70	28,44(2900)/ 26,72(2725)	8,5 (850)
245/70R19.5	FR-1	136/134	130 (M)	16	13	19,5X7,50	19,5X6,75	258	390	D C 70	21,97(2240)/ 20,79(2120)	8,3 (830)
235/75R17.5	FR-1	132/130	130 (M)	12	13,5	17,5x6,75	17,5x7,50	242	372	D C 70	19,61 (2000)/ 18,63 (1900)	7,9 (790)
215/75R17.5	FR-1	126/124	130 (M)	12	13	17,5X6,00	17,5X6,75	220	359	D C 70	16,67(1700)/ 15,69(1600)	7,0 (700)
DRIVE-AXLE												
315/80R22.5	DR-1	156/150, 154/150*	120 (L), 130 (M)*	20	20,5	22,5X9,00	22,5X9,75	318	500	E B 74	39,23 (4000), 32,85(3350)/ 36,78 (3750), 32,85 (3350)*	9,0 (900)
315/70R22.5	DR-1	154/150, 152/148*	120 (L), 130 (M)*	18	20	22,5X9,00	22,5X9,75	318	500	E B 74	36,78(3750), 32,85(3350)/ 34,81(3550), 30,89(3150)*	9,0 (900)
315/70R22.5	DL-2	154/150, 152/148	120 (L), 130 (M)	18	16,5	22,5x9,00	22,5x9,75	318	475	C C 73	36,78(3750), 32,85(3350)/ 34,81(3550), 30,89(3150)*	9,0 (900)
315/60R22.5	DL-1	152/148	110 (K)	20	19,5	22,5X9,75	22,5X9,00	326	451	D C 71	34,81(3550)/ 30,89(3150)	9,0 (900)
295/80R22.5	DR-1	152/148	130 (M)	16	20,5	22,5X9,00	22,5X8,25	310	487	E B 74	34,81(3550)/ 30,89(3150)	8,5 (850)
295/75R22.5	DR-1	149/146	120 (L)	16	20	22,5X9,00	22,5X8,25	310	476	E B 74	31,87(3250)/ 29,42(3000)	8,5 (850)
295/60R22.5	DL-1	150/147	110 (K)	18	19,5	22,5X9,00	22,5X9,75	304	430	D C 71	32,85(3350)/ 30,16 (3075)	9,0 (900)
245/70R19.5	DR-1	136/134	130 (M)	16	16	19,5X7,50	19,5X6,75	258	389	E B 74	21,97(2240)/ 20,79(2120)	8,3 (830)
235/75R17.5	DR-1	132/130	130 (M)	12	16,5	17,5x6,75	17,5x7,50	242	372	E B 74	19,61 (2000)/ 18,63 (1900)	7,9 (790)
225/75R17.5	DR-1	129/127	130 (M)	12	16	17,5X6,75	17,5X6,00	235	371	E B 74	18,14 (1850)/ 17,16(1750)	7,25 (725)
215/75R17.5	DR-1	126/124	130 (M)	12	16	17,5X6,00	17,5X6,75	220	359	E B 74	16,67(1700)/ 15,69(1600)	7,0 (700)
205/75R17.5	DR-1	124/122	130 (M)	12	15,5	17,5X6,00	17,5X6,75	213	357	E B 74	15,69(1600)/ 14,71(1500)	7,5 (750)
13R22.5	DM-1	154/150, 156/150*	110 (K), 90 (G)	18	22,5	22,5X9,75	22,5X9,00	326	521	E B 74	36,78(3750), 32,85(3350)/ 39,23(4000), 32,85(3350)*	8,6 (860); 9,0 (900)*
315/80R22.5	DM-1	156/150	110 (K)	20	22,5	22,5X9,00	22,5X9,75	318	500	E B 74	39,23(4000) / 32,85(3350)	9,0 (900)
12R22.5	DM-1	152/148	110 (K)	16	23	22,5x9,00	22,5x8,25	312	504	E B 74	34,81 (3550) / 30,89 (3150)	8,6 (860)
11R22.5	DM-1	148/145	110 (K)	16	22,5	22,5X8,25	22,5X7,50	290	498	E B 74	30,89 (3150) / 28,44 (2900)	8,6 (860)
TRAILER-AXLE												
385/65R22.5	TL-1	160	110 (K)	20	14,5	22,5x11,75	22,5x12,25	389	490	B C 69	44,13 (4500)	9,0 (900)
385/65R22.5	TR-1	160(158*)	110 (K), 120 (L)*	20	16	22,5X11,75	22,5X12,25	405	500	C B 70	44,13(4500), 41,68(4250)*/-	9,0 (900)
385/65R22.5	TR-2	160(158*)	110 (K), 120 (L)*	20	17,5	22,5X11,75	22,5X12,25	405	490	C D 70	44,13(4500), 41,68(4250)*/-	9,0 (900), 8,5(850)*
385/65R22.5	TM-1	160	110 (K)	20	18	22,5x11,75	22,5x12,25	405	496	D C 76	44,13 (4500)/-	9,0 (900)
385/65R22.5	TR-1	160(158*)	110 (K), 120 (L)*	20	15	22,5X12,25	22,5X11,75	401	464	C B 70	44,13 (4500), 41,68(4250)*/-	9,0 (900), 8,5 (850)*
265/70R19.5	TR-1	143/141	100 (J)	16	13,5	19,5X7,50	19,5X6,75; 19,5X8,25	272	396	C B 70	26,72(2725)/ 25,25(2575)	8,5 (850)
245/70R17.5	TR-2	143/141	100 (J)	18	10,5	17,5X7,5	17,5X6,75	258	365	C D 70	26,72(2725)/ 25,25(2575)	9,0 (900)
235/75R17.5	TR-1	143/141	100 (J)	18	13	17,5X6,75	17,5X7,50	242	362	C B 70	26,72(2725)/ 25,25(2575)	9,0 (900)
215/75R17.5	TR-1	135/133	100 (J)	16	12,5	17,5X6,00	17,5X6,75	220	357	C B 70	21,38 (2180)/ 20,20 (2060)	8,5 (850)
ALL POSITION (DRIVE AND STEER)												
275/70R22.5	VC-1	148/145, 152/148*	100 (J), 70 (E)*	18	22	22,5X8,25	22,5X7,50	287	450	E B 73	30,89(3150), 28,44(2900)/ 34,81 (3550)/ 30,89 (3150)*	9,0 (900)
245/70R19.5	VR-1	136/134	110 (K)	16	15	19,5x7,50	19,5x6,75	258	395±6	D C 74	21,97(2240)/20,79(2120)	8,3 (830)
13R22.5	VM-1	154/150, 156/150	110 (K), 90 (G)	18	18,5	22,5x9,75	22,5x9,00	326	521	D C 71	36,78 (3750)/32,85(3350)/ 39,23(4000), 32,85(3350)*	8,6 (860), 9,0 (900)*
315/80R22.5	VM-1	156/150	110 (K)	20	17	22,5X9,00	22,5X9,75	318	500	D C 74	39,23 (4000)/ 32,85(3350)	9,0 (900)
11R22.5	VM-1	148/145	110 (K)	16	19	22,5X8,25	22,5X7,50	290	495	D C 74	30,89 (3150)/ 28,44 (2900)	8,6 (860)

* Additional operating mode ** Tyre is on probation



SAVE-COR

STONE-COR

STEEL-COR

BARO GMBH
REIFENHANDEL AUS LEIDENSCHAFT

OFFIZIELLER VERTRIEBSPARTNER IN DEUTSCHLAND

+49 (40) 219 0 129-0
Melden Sie sich telefonisch bei uns,
wir beraten Sie gerne.

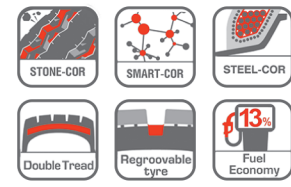
LONG DISTANCE

The range of tyres for the long haul is specifically designed for use on long distances at high speeds. Through the application of the new generation compounds containing silica and new types of polymers in the belt layers, it provides an increased level of fuel economy and guarantee long runtime. Cordiant Professional tyres allow carrier companies to increase their economic efficiency.



FL-1 FL-2

FL-1 STEER AXLE		FL-2 STEER AXLE	
315/60R22.5	152/148 (L)	315/70R22.5	154/150 (L), 152/148 (M)
295/60R22.5	150/147 (L)	385/55R22.5	160 (K), 158 (L)



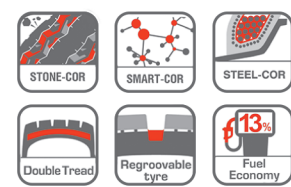
ADVANTAGES:

- New modern tread patterns of long distance tyres
- Steering tyres have an advanced level of fuel efficiency - class C under EU ecolabelling rules (EU Directive 1222/2009). It means high economic efficiency during the usage of these tyres.
- A special round belt with a unique geometrical form in the bottom of the shoulder groove increases the contact patch in the shoulder zone, protecting the tyre from uneven wear when the tread is worn out by 30% or more.
- The STONE-SHIELD technology provides a high level of cargo transportation safety through the use of a unique 3D geometry of tread grooves - large stones and dirt pieces are not captured, while small stones are ejected from the tyre tread grooves to ensure reliable operation and tyre integrity.



DL-1 DL-2

DL-1 DRIVE AXLE		DL-2 DRIVE AXLE	
315/60R22.5	152/148 (K)	315/70R22.5	154/150 (L), 152/148 (M)
295/60R22.5	150/147 (K)		



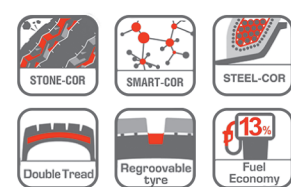
ADVANTAGES:

- Tyre for driving axle provides improved fuel economy because of the new composition of the rubber compound and special tread pattern developed for the long haul.
- A special system of longitudinal grooves that have a zig-zag shape and a transverse sipes, and grooves in the shoulder ribs provides increased traction with the road surface and excellent braking characteristics.
- Stone Ejector elements STONE-SHIELD technology at the base of the tread grooves reduce stone sticking and increases the resistance to aggressive conditions.
- The STEEL-DEFENCE technology reinforces the tyre through the use of special U-shaped structure of bead zone and rim wire made of high-tensile steel, thereby increasing tyre reliability in difficult conditions.



TL-1

TL-1 TRAILER AXLE	
385/65R22.5	160 (K)



ADVANTAGES:

- Improved fuel economy because of the new composition of the rubber compound and special tread pattern developed for the long haul.
- The STEEL-DEFENCE technology reinforces the tyre through the use of special U-shaped structure of bead zone and rim wire made of high-tensile steel, thereby increasing tyre reliability in difficult conditions.
- A special 3D-geometry of tread grooves with STONE-SHIELD technology protect it from stone digging-in and ensures prolonged life of tyre.

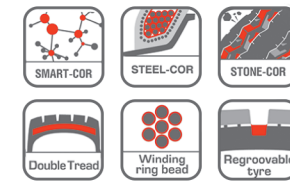
REGIONAL TRAFFIC

Regional roads are prevailing type of roads for trailers. Such tracks are characterized by various different surfaces, gravel areas, frequent twists and exits. Cordiant Professional tyres due the use of special technologies successfully cope with all specifics of regional routes. In addition to the unique 3D geometry of the tread grooves, which prevent ingress of stones into tread, Cordiant Professional tyres have good traction on the road and high millage. Ultrareliable carcass allows recap and retread of truck tyres.



FR-1

FR-1 STEER AXLE			
385/65R22.5	158 (L), 160 (K)	285/70R19.5	145/143 (M)
315/80R22.5	156/150 (L), 154/150 (M)	245/70R19.5	136/134 (M)
315/70R22.5	154/150 (L), 152/148 (M)	235/75R17.5	132/130 (M)
295/80R22.5	152/148 (M)	215/75R17.5	126/124 (M)



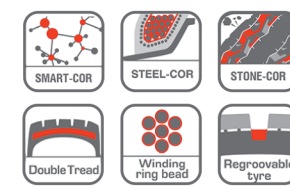
ADVANTAGES:

- Modern steering tyre tread pattern with four longitudinal grooves improves water drainage from the contact patch and improves the control accuracy in sharp and frequent turning.
- A special 3D-geometry of tread grooves with STONE-SHIELD technology protects from stone penetration and prolongs tyre life.
- Durability and wear resistance are the results of multiplied number of active carbon-polymer interaction centers in SMART-ENDURANCE compound.



DR-1

DR-1 DRIVE AXLE			
315/80R22.5	156/150 (L), 154/150 (M)	235/75R17.5	132/130 (M)
315/70R22.5	154/150 (L), 152/148 (M)	225/75R17.5	129/127 (M)
295/80R22.5	152/148 (M)	215/75R17.5	126/124 (M)
295/75R22.5	149/146 (L)	205/75R17.5	124/122 (M)
245/70R19.5	136/134 (M)		



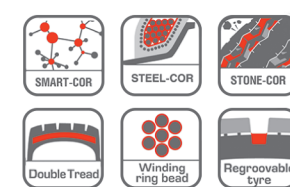
ADVANTAGES:

- According to test results of International Independent Certification Center, Cordiant Professional tyres for driving axle have got a class B for braking on a wet road according to European Union Directive 1222/2009 on European labelling.
- Unique STONE-SHIELD protection from stones. A special stone ejectors in central grooves protects from penetration of stones and reduces the risk of tread damage.



TR-1 TR-2

TR-1 TRAILER AXLE		TR-2 TRAILER AXLE	
385/65R22.5	160 (K), 158 (L)	385/65R22.5	160 (K), 158 (L)
385/55R22.5	160 (K), 158 (L)	245/70R17.5	143/141 (J)
265/70R19.5	143/141 (J)		
235/75R17.5	143/141 (J)		
215/75R17.5	135/133 (J)		



ADVANTAGES:

- A new SMART-ENDURANCE rubber compound increases tear resistance, reduces tread wear and prolongs tyre life.
- STEEL-DEFENCE strengthened U-scheme of bead structure reduces tension in bead ring zone, making easier the wheel balancing and rim fitting.
- Wider hard shoulder zones without superfluous sipes allow to carry high lateral loads on trailer axles.

ON/OFF ROAD AND BUS

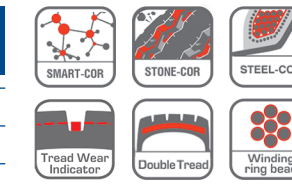
Construction tyres Cordiant Professional VM-1, DM-1 and TM-1 are designed specifically for use on construction sites and quarries. Excellent resistance to wearing, cuts as well as resistance to aggressive conditions were achieved through the use of more durable special rubber and reinforced metal layers under the tread.

Tread pattern of the bus tyres Cordiant Professional VC-1 and VR-1 designed for year-round operation with possibility of mounting on any axle of vehicles.



VM-1 DM-1

VM-1 ALL POSITION		DM-1 DRIVE AXLE	
315/80R22.5	156/150 (K)	315/80R22.5	156/150 (K)
11R22.5	148/145 (K)	11R22.5	148/145 (K)
13R22.5	154/150 (K)	13R22.5	154/150 (K)
	156/150 (G)	12R22.5	152/148 (K)



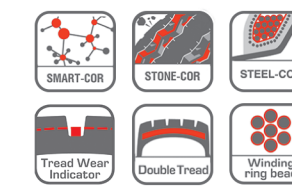
ADVANTAGES:

- Model VM-1 with the all-purpose tread pattern for use on roads with often visits on construction sites.
- DM-1 model is more suitable for aggressive and severe conditions, quarry and off-road. It has directional tread pattern with massive size of lugs.
- Technology of coiling the bead ring from separate wires - Winding ring bead - reduces tension in bead zone and makes wheel balancing and rim fitting easier. A reliable bead ring with good rim fitting provides airtightness.



TM-1

TM-1 TRAILER AXLE	
385/65R22.5	160 (K)



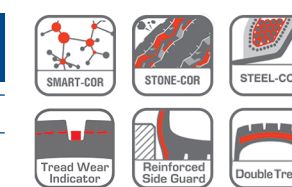
ADVANTAGES:

- Aggressive tread pattern with massive sized blocks protects the shoulder area reducing the risk of damage. Increased tread depth for longer life.
- Excellent resistance to abrasion and cuts thanks to more durable special rubber compound as well as to the reinforced metal layers under the tread.
- A special rim cushion with metal cord strengthens the bead zone and increases reliability in difficult conditions.
- Technology of coiling the bead ring from separate wires - Winding ring bead - reduces tension in bead zone and makes wheel balancing and rim fitting easier. A reliable bead ring with good rim fitting provides airtightness.



VC-1 VR-1

VC-1 ALL POSITION		VR-1 ALL POSITION	
275/70R22.5	148/145 (J) 152/148 (E)	245/70R19.5	136/134 (K)



ADVANTAGES:

- A new universal tread pattern provides economic efficiency when used on buses and trolley-buses in urban setting.
- Reinforced Side Guard protects the tyre against damage from road curb and other obstacles. The side wear indicator allows to check the tyre wear easily.
- Tread rubber is more durable and wear-proof thanks to an increased number of active carbon-polymer interaction centers in the SMARTENDURANCE compound.