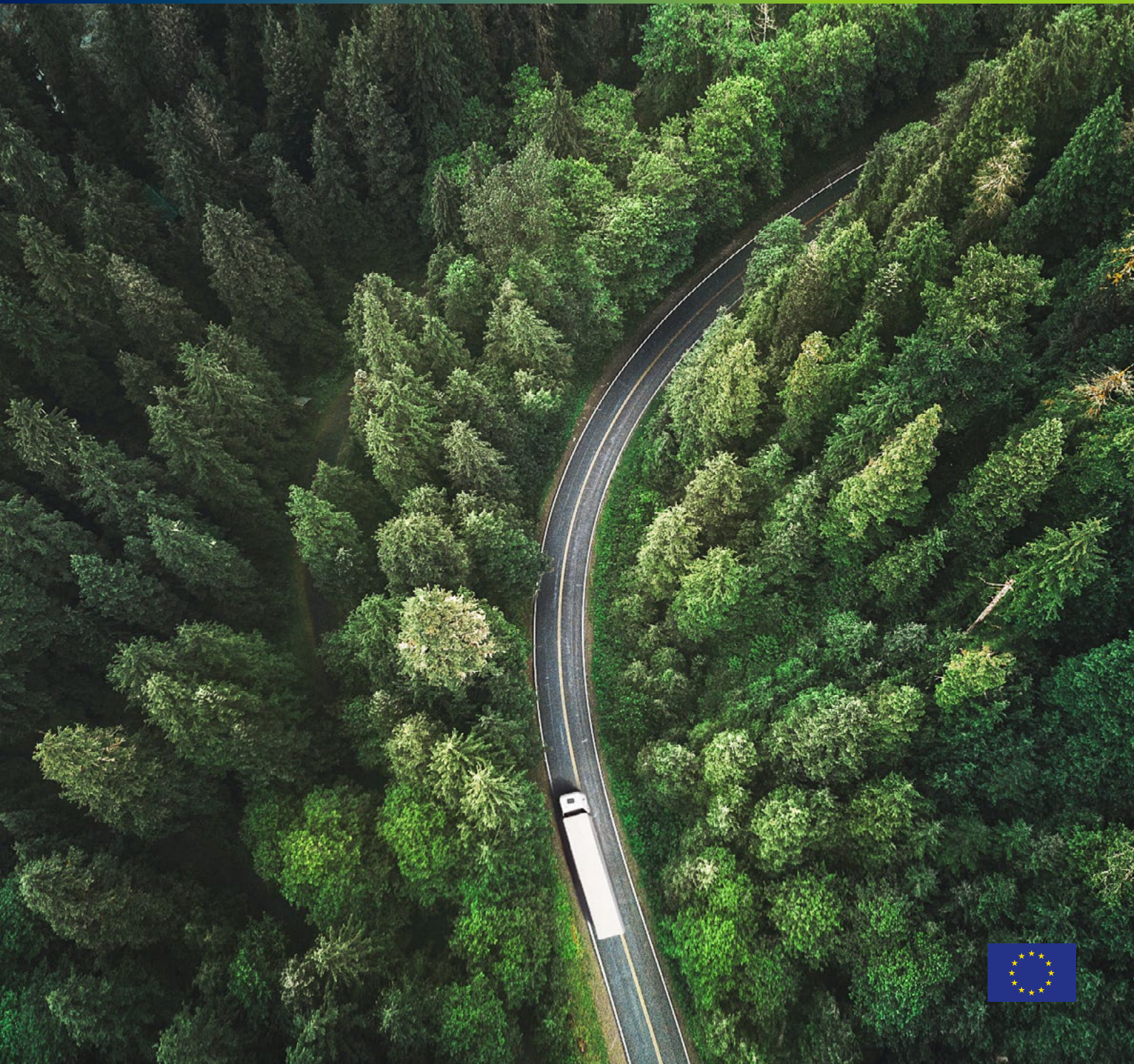


EVERGREEN

drive to the future

TRUCK AND BUS TYRES

PRODUCT CATALOGUE



EVERGREEN



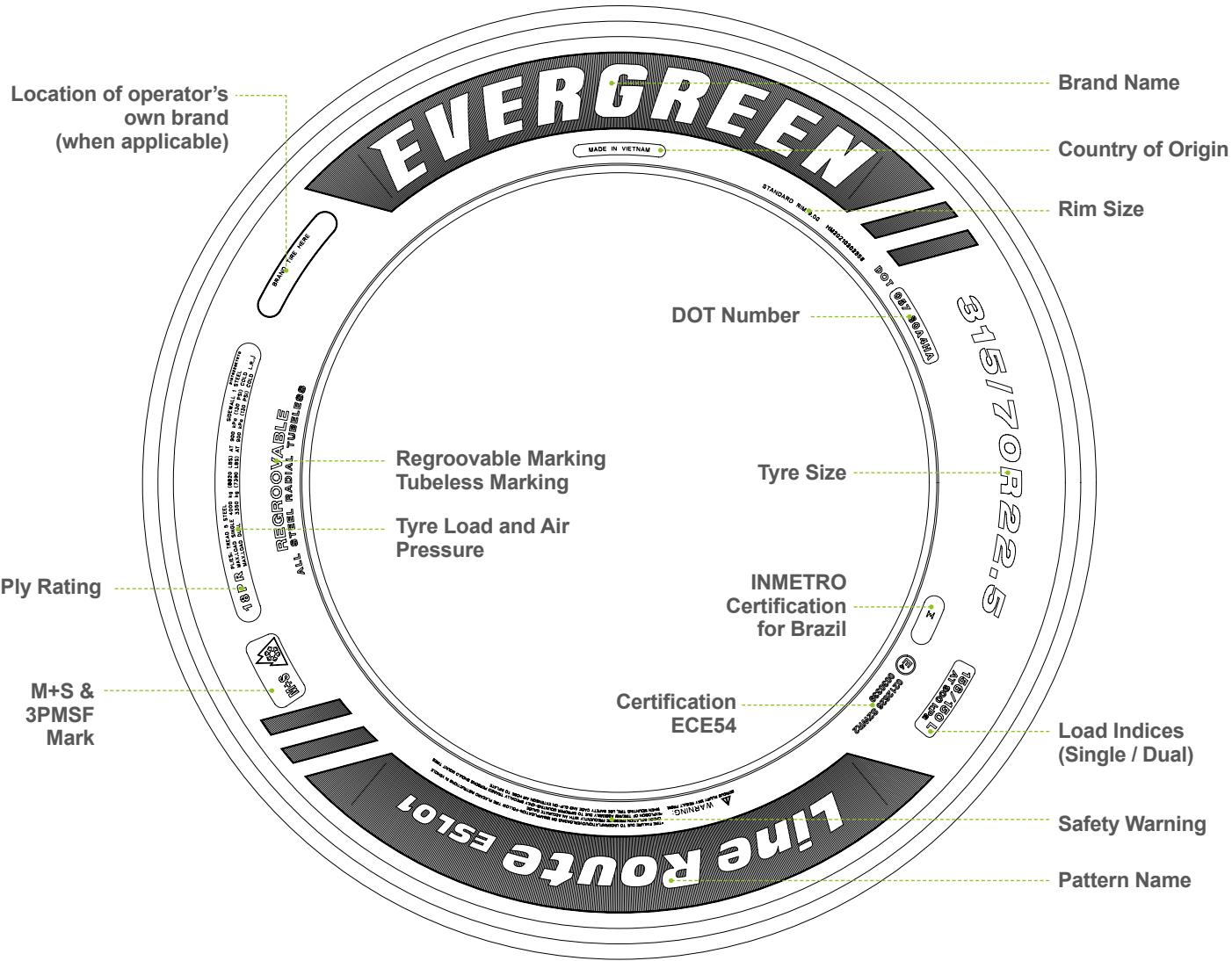
OFFIZIELLER VERTRIEBSPARTNER IN DEUTSCHLAND

BaRO GMBH
REIFENHANDEL AUS LEIDENSCHAFT

BaRo GmbH
Hans-Duncker-Straße 9
21035 Hamburg

info@baro-reifen.de
www.baro-reifen.de
www.shop.baro-reifen.de

TYRE SIDEWALL DIAGRAM



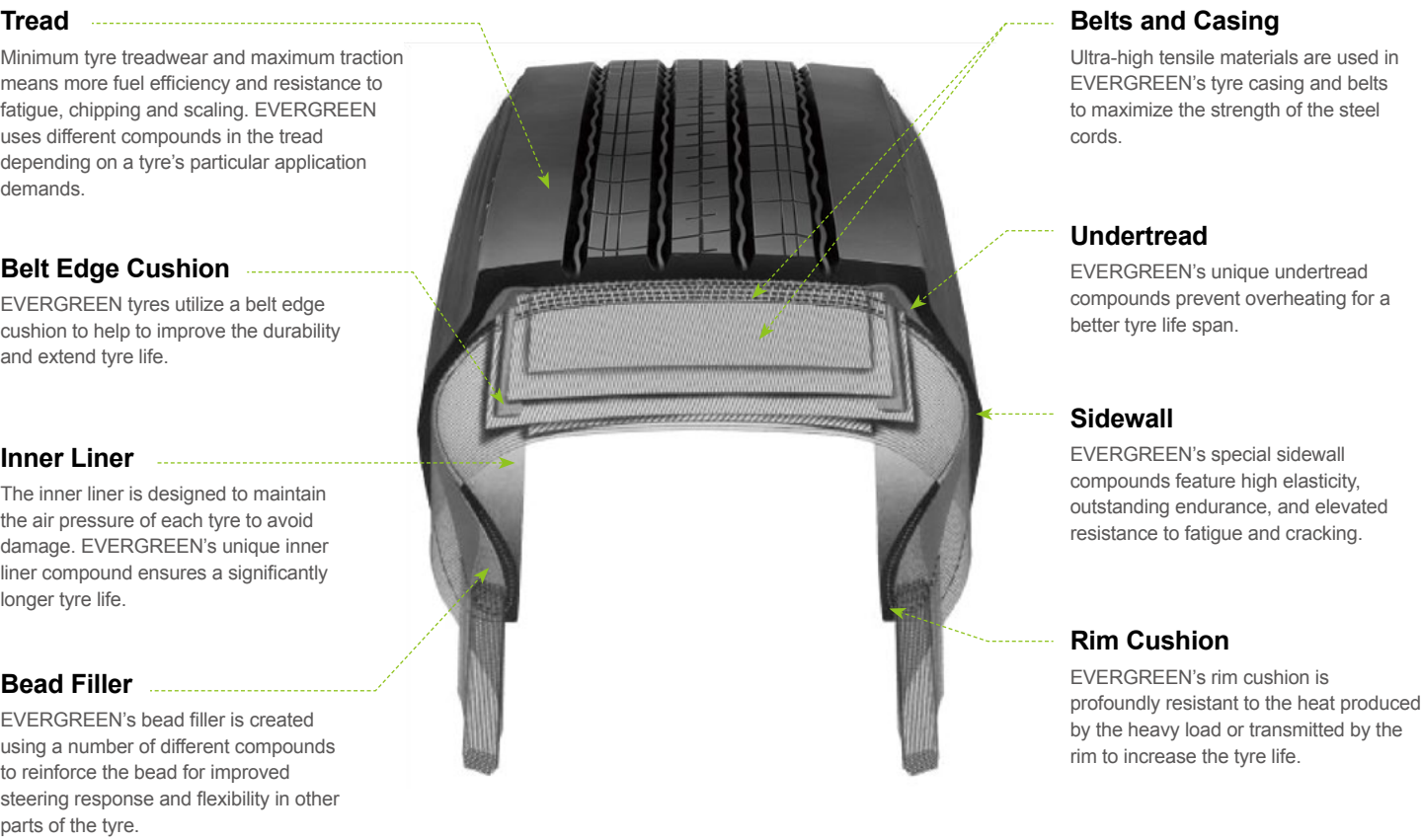
TECHNOLOGIES FOR TYRES WITH THE VALUE

EVERGREEN is constantly striving to create the best solutions for each application. EVERGREEN's commitment to you and the environment ensures cost-effective quality tyres.

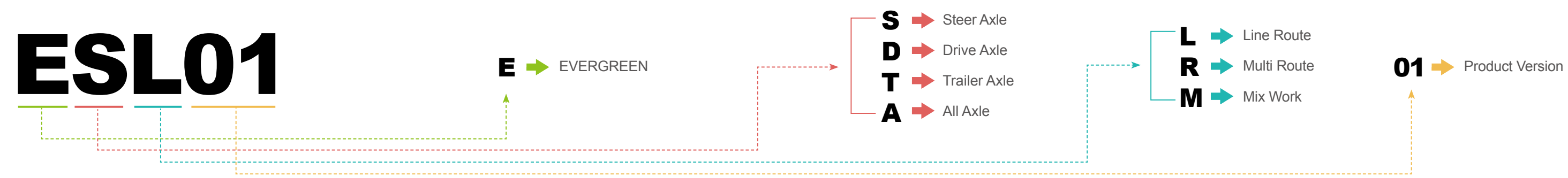
EVERGREEN PHILOSOPHY

EVERGREEN is a brand dedicated to environmental protection and sustainable development through technological advancement. Our values are even reflected in the colors of our logo: Green-evergreen, representing environmental protection; Blue-science and technology, reflecting our speed and advanced design.

Tyre Construction



HOW TO READ THE PROFILE NAME



EVERGREEN, DRIVE TO THE FUTURE

We only have one Earth, and every individual must do their part to in caring for it.

EVERGREEN takes this commitment seriously. The spirit of environmental sustainability is embedded in all the tyres we make.

We believe in doing our part to protect the world's limited resources by developing tyres in a sustainable, responsible way to ensure the health and wellbeing of our future generations.

CONTENTS

LineRoute

Pg.01 — Pg.10



LineRoute
ESL01

LineRoute
EDL11

LineRoute
ETL23

LineRoute
ETL25

MultiRoute

Pg.11 — Pg.20



MultiRoute
EAR30

MultiRoute
EDR50

MultiRoute
EDR51

MultiRoute
ETR31

MixWork

Pg.21 — Pg.28



MixWork
EDM60

MixWork
EAM61

MixWork
EAM62

Winter

Pg.29 — Pg.34



Winter EAW81

Winter EAW82

SERIES	ICON	APPLICATION
LineRoute		<ul style="list-style-type: none">• Long-range travel with consistent speed and less braking or accelerating.• Well paved road surface with fewer curves.
MultiRoute		<ul style="list-style-type: none">• Journeys with repeated braking, acceleration, and turning.• Well-paved road with curves and occasionally rough conditions.
MixWork		<ul style="list-style-type: none">• Both on and off road with aggressive, uneven, or muddy road conditions.• Heavy loads at medium to slow speeds and frequent stopping.
Winter		<ul style="list-style-type: none">• Good ice and snow traction and grip during entire tire lifecycle.• Designed for extreme weather conditions on a variety of surfaces.

The LineRoute Series



LineRoute
ESL01

LineRoute
EDL11

LineRoute
ETL23

LineRoute
ETL25



Ultra Anti-Wear Tread

Superior wear resistance with high-structure reinforcement and the latest coupling materials.



Responsive Stress Distribution Technology

Top-rated safety is guaranteed with this technology, which can disperse the ground pressure efficiently for extended and high-speed driving.



Energy-Saving Structure and Formula

The well-designed formula and structure minimize hysteresis loss of the tyre and optimizes its fuel-saving performance.

LineRoute ESL01

The latest generation of high performance steering tyre for national and regional operations.



LONGEVITY

Remarkably high mileage performance on highway and regional use



SAFETY

Maximum safety and steering stability thanks to the new generation of structure design and strict quality control regulations.



GREEN

Fuel-saving design for fewer CO₂ emissions and lower operating cost.

LineRoute **ESL01**



TECHNICAL FEATURES

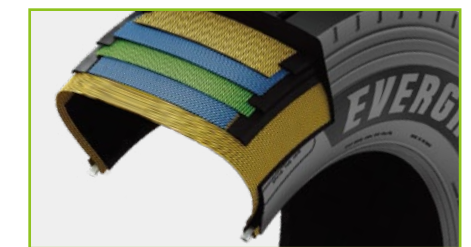
Advanced silica-rich cap and base compounds provide maximized mileage and minimized fuel consumption.



The latest wave-shape groove design improves the steering accuracy while also ensuring fast reaction response during accelerating.



By optimizing the outline structure, each unit area of the tread can receive the pressure of the vehicle evenly to improve the wear performance.



SIZE RANGE



Size	PR	LI/SS	Tread Depth (mm)	M+S					
275/70R22.5	16PR	148/145M	15	√	√	C	B	71dB	A
275/80R22.5	18PR	149/146L	16	√	√	C	B	71dB	A
295/60R22.5	18PR	150/147L	15	√	√	C	B	71dB	A
295/80R22.5	18PR	152/149M	16	√	√	C	B	71dB	A
295/80R22.5	18PR	154/149M	16	√	√	C	B	71dB	A
315/70R22.5	18PR	156/150L	15.5	√	√	C	B	71dB	A
315/80R22.5	20PR	156/153L	16.5	√	√	C	B	71dB	A

LineRoute EDL11

The latest generation of high-performance drive tyre for national and regional operations.



SAFETY

Best-in-class durability for extended and high-speed driving.



LONGEVITY

Excellent mileage for long-haul and regional use.



GREEN

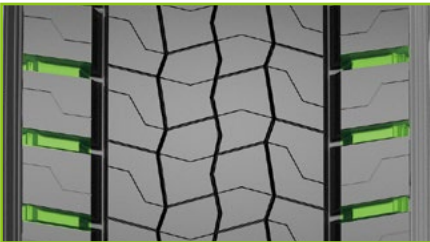
Designed to minimize CO₂ emission and fuel costs.

LineRoute **EDL11**

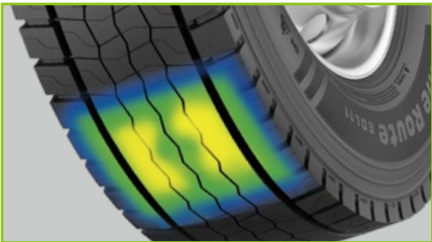


TECHNICAL FEATURES

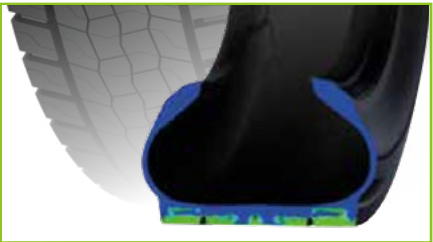
The wider shoulder lugs enhance traction and water drainage.



The highly effective contact area separates loading pressure evenly for better mileage performance.







Optimized compressive stiffness minimizes deformation and energy losses to reduce fuel consumption.



SIZE RANGE



Size	PR	LI/SS	Tread Depth (mm)	M+S					
295/60R22.5	18PR	150/147L	18	√	√	C	C	73dB	A
295/80R22.5	18PR	152/149L	19	√	√	C	C	73dB	A
295/80R22.5	18PR	154/149L	19	√	√	C	C	73dB	A
315/70R22.5	18PR	156/150L	19	√	√	C	C	73dB	A
315/80R22.5	20PR	156/153L	20	√	√	C	C	73dB	A



LineRoute ETL23

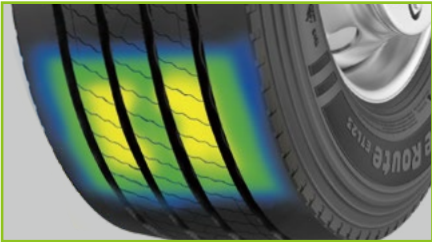
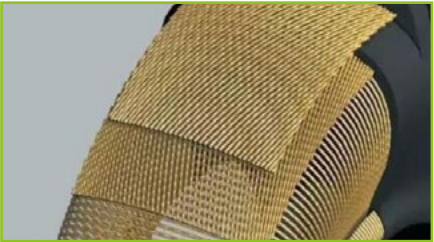


TECHNICAL FEATURES

Ultra-tensile cord incorporated into the body material for excellent durability and retreadability.

The highly effective contact area separates loading pressure evenly for better mileage performance.

The latest silica-rich formula and cutting edge mixing technology ensure excellent tyre longevity and low rolling resistance.



LineRoute ETL23

The latest generation of high-performance trailer tyre for national and regional operations.



LONGEVITY

Up to 20% more mileage compared to competitors.



GREEN

Improved rolling resistance for minimized fuel consumption.



SAFETY

3PMSF and M+S mark ensures excellent grip all year round.

SIZE RANGE



Size	PR	LI/SS	Tread Depth (mm)	M+S					
385/55R22.5	20PR	160K	15	√	√	C	B	72dB	B
385/65R22.5	20PR	160K	15.5	√	√	C	B	72dB	B
385/65R22.5	24PR	164K	15.5	√	√	C	B	72dB	B



LineRoute ETL25

The latest generation of high-performance trailer tyre for national and regional operations.



LONGEVITY

Up to 20% more mileage compared to competitors.



GREEN

Improved rolling resistance for minimized fuel consumption.



SAFETY

3PMSF and M+S mark ensures excellent grip all year round.

LineRoute ETL25

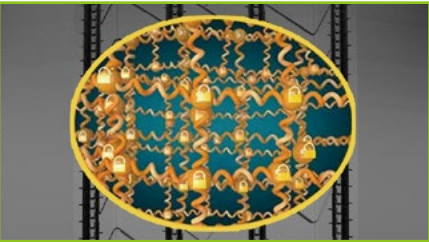


TECHNICAL FEATURES

Wide tread and 4 straight grooves provides excellent handling, traction and safety.

Optimized wear-resistant tread compound provides extra-long miles.

Unique tyre shoulder design reduces irregular wear and delivers excellent mileage performance.



SIZE RANGE



Size	PR	LI/SS	Tread Depth (mm)	M+S				
435/50R19.5	20PR	160J	16	✓	✓	C	B	73dB C
445/45R19.5	20PR	160J	16	✓	✓	C	B	73dB C

The MultiRoute Series



MultiRoute
EAR30

MultiRoute
EDR50

MultiRoute
EDR51

MultiRoute
ETR31



Multi-Purpose Performance Formula

Nano-silica and high-quality natural rubber tread compounds ensure the tyre's durability on long-haul and regional road conditions.



Shoulder Rigidity Reinforced Design

By optimizing the overall material distribution of the tyre, the rigidity and handling stability of the tyre is has been greatly improved.



Ultra-High Tensile Cord

The UHT carcass cords provide better anti-deformation performance for the tyre, while at the same time better dispersing the pressure and significantly increasing the safety performance of the tyre.



MultiRoute EAR30

The latest generation of high-performance steer and trailer tyre for national and regional operations.



LONGEVITY

Excellent life span on well paved road surfaces.



SAFETY

Great stability for all axle positions applications.



CONTROL

Good wet and dry maneuverability, especially with repeated braking or accelerating traffic conditions.

MultiRoute EAR30

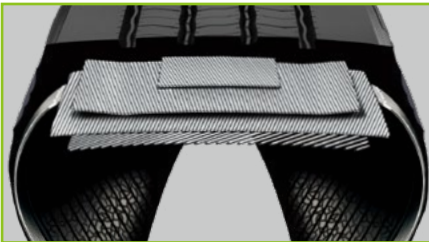


TECHNICAL FEATURES

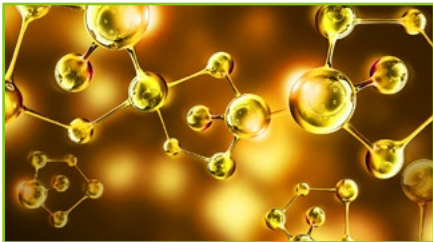
The optimized pattern design improves both dry and wet handling in changing regional traffic conditions.



The high, rigid belt structure enhances driving stability.



The enhanced tread formula ensures long tread life and excellent cut or chip resistance.



SIZE RANGE



Size	PR	LI/SS	Tread Depth (mm)	M+S				
205/75R17.5	14PR	124/122M	13	√	√	C	C	73dB B
215/75R17.5	16PR	135/133L	12.5	√	√	C	C	73dB B
235/75R17.5	18PR	143/141L	13	√	√	C	C	73dB B
245/70R19.5	18PR	144/142J	13	√	√	C	C	73dB B
265/70R19.5	18PR	143/141J	13.5	√	√	C	C	73dB B
285/70R19.5	18PR	150/148K	14	√	√	C	C	73dB B



MultiRoute EDR50

The latest generation of high- performance drive tyre for national and regional operations.



LONGEVITY

Long mileage performance for lower operating cost.



SAFETY

Great durability for Challenging or unexpected conditions on paved-road surfaces.



CONTROL

Outstand traction for long-haul, regional and urban use.

MultiRoute EDR50

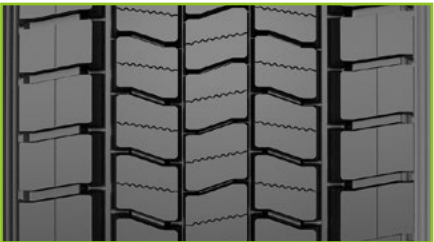


TECHNICAL FEATURES

The unique pattern design enhances wet and dry grip, as well as water drainage.

The Silicon-rich tread compound ensures strong links in the polymer network for high abrasion resistance.

Regular pressure distribution ensures higher mileage potential.



SIZE RANGE



Size	PR	LI/SS	Tread Depth (mm)	M+S					
205/75R17.5	14PR	124/122L	15	√	√	D	C	72dB	A
215/75R17.5	16PR	135/133L	15	√	√	D	C	72dB	A
235/75R17.5	18PR	143/141L	15	√	√	D	C	72dB	A
265/70R19.5	18PR	143/141J	15.5	√	√	D	C	72dB	A
285/70R19.5	18PR	150/148K	16	√	√	D	C	72dB	A

MultiRoute EDR51

The latest generation of high-performance drive tyre for national and regional operations.



LONGEVITY

Long life span and low rolling resistance to lower tyre and fuel expenses.



SAFETY

Excellent stability and durability, even in challenging weather conditions.



CONTROL

Excellent wet and dry grip even in low temperatures.

MultiRoute EDR51

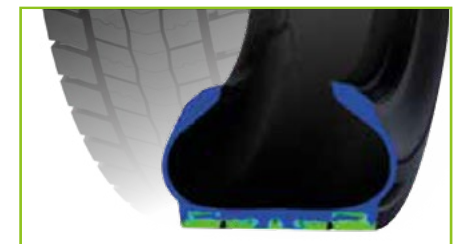
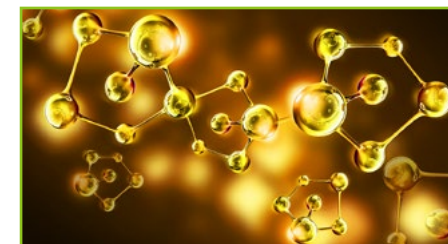
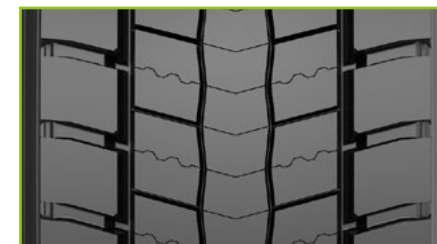


TECHNICAL FEATURES

The unique pattern ensures the fuel efficiency and even wear for lower operation costs.

The tread formula ensures grip and traction in low temperature environments.

The low deformation frame structure ensures long-term stability and durability for increased safety.



SIZE RANGE



Size	PR	LI/SS	Tread Depth (mm)	M+S				
275/80R22.5	16PR	146/143L	22	√	√	Available from Jun. 2022		
295/60R22.5	18PR	150/147L	19	√	√	D	C	74dB B
295/80R22.5	18PR	152/149L	22	√	√	D	C	74dB B
295/80R22.5	18PR	154/149L	22	√	√	D	C	74dB B
315/70R22.5	18PR	156/150L	20	√	√	D	C	74dB B
315/80R22.5	20PR	156/153L	22.5	√	√	D	C	74dB B



MultiRoute ETR31

The latest generation of high-performance trailer tyre for national and regional operations.



LONGEVITY

Up to 20% more mileage compared to competitors.



GREEN

Improved rolling resistance for minimized fuel consumption.



SAFETY

3PMSF and M+S mark ensures excellent grip all year round.

MultiRoute ETR31

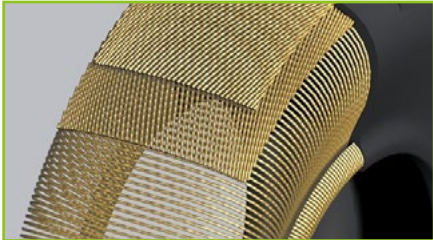
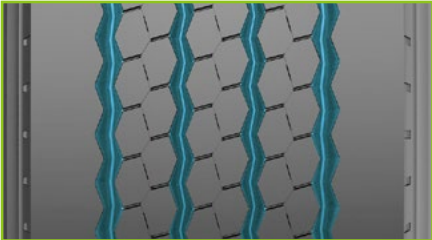
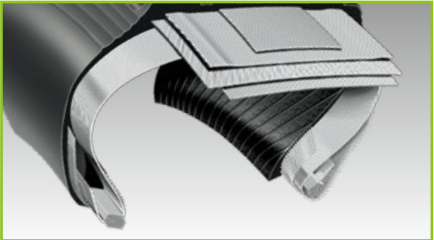


TECHNICAL FEATURES

Optimized wide tread and four-belt design improves longevity and enhances retreadability.

Increased tread depth and rectangle footprint promote even wear and mileage potential.

High conductive cord accelerates heat transition which helps lower rolling resistance and increases fuel efficiency.



SIZE RANGE



Size	PR	LI/SS	Tread Depth (mm)	M+S					
385/65R22.5	20PR	160K	17.5	✓	✓				
385/65R22.5	24PR	164K	17.5	✓	✓				

Available from Jun. 2022

The MixWork Series



MixWork
EDM60

MixWork
EAM61

MixWork
EAM62



Extra Reinforced Bead Structure

The reinforced bead design allows the tyre to adapt to harsh working environments.



Specialized Tread Reinforcement Formula

Highly dispersed nano-silica and high-strength rubber blended to an optimal ratio maximize the safety of tires on harsh roads.



Ternary Alloy Wire

Special TAWI cord with ultra-high tensile strength reduces the rubber aging and significantly increases the tyre's service life in harsh road conditions.

MixWork EDM60

The latest generation of high-performance drive tyre for on and off operations.



TOUGHNESS

Excellent cut and chip resistance for challenging workplace application.



LONGEVITY

Long lasting and durable structure for extended tyre life span.



CONTROL

Outstanding traction for all on & off surface.

MixWork EDM60

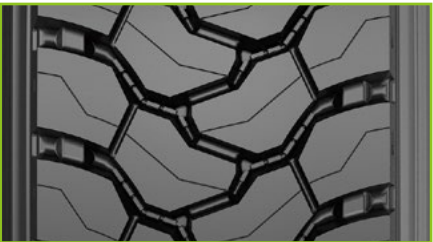
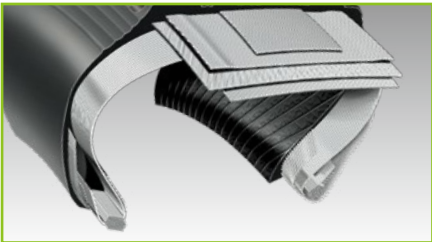


TECHNICAL FEATURES

Exceptional resistance to damage by compounds with advanced resistance for tread to cuts and tears.


Durable casing design for maximum service life in demanding mixed work use.

Latest pattern designed for maximized traction in harshest terrain.



SIZE RANGE



Size	PR	LI/SS	Tread Depth (mm)	M+S					
13R22.5	20PR	156/150K	20.5	√	√	E	C	77dB	C
315/80R22.5	20PR	156/153K	21	√	√	E	C	77dB	C



MixWork EAM61



MixWork EAM61

The latest generation of high-performance all-position tyre for on and off operations.



TOUGHNESS

Highly cut, chip, and abrasion resistant on paved and unpaved road surfaces.



LONGEVITY

Enhanced structure for a lasting life span.

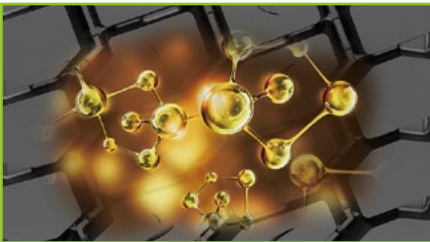


CONTROL

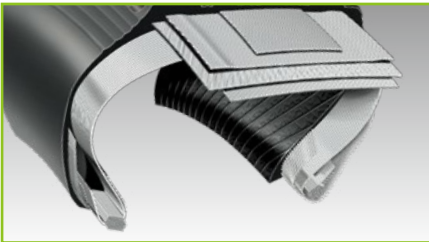
Outstanding grip and stability on both on and off terrain for all-axle use.

TECHNICAL FEATURES

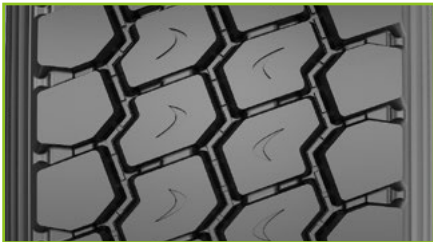
A special formula developed for abrasion resistance and anti-cut and chip capability for on and off terrain.



A frame structure reinforced with UT cord ensures a long life span.



A state-of-the-art wide-base pattern design with great control capability for on and off application.



SIZE RANGE



Size	PR	LI/SS	Tread Depth (mm)	M+S				
385/65R22.5	20PR	160K	17.5	√	√	C	C	72dB B
385/65R22.5	24PR	164K	17.5	√	√	C	C	72dB B



MixWork EAM62

The latest generation of high-performance all-position tyre for on/off operations.



TOUGHNESS

Excellent anti-wear performance and cut and chip resistance for paved roads and work sites.



LONGEVITY

Improved structure for better durability and longer tyre life span.



CONTROL

Excellent traction and control for all-axle applications.

MixWork **EAM62**

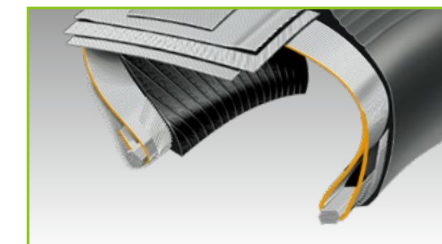


TECHNICAL FEATURES

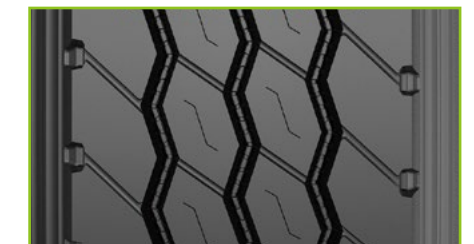
The latest tread compound is used for outstanding mileage and resistance for high-scrub applications.



The reinforced bead construction provides excellent structural durability to extend tyre life.



A unique 4-ribbed zip-zag design provides outstanding handling for all-axle applications.



SIZE RANGE



Size	PR	LI/SS	Tread Depth (mm)	M+S					
13R22.5	18PR	154/151K	18	√	√	C	B	72dB	B
13R22.5	20PR	156/150K	18	√	√	C	B	72dB	B
315/80R22.5	20PR	156/153L	17	√	√	C	B	72dB	B

The Winter Series



Winter **EAW81**

Winter **EAW82**



Advanced Siping Technology

Effective 3D siping technology improves winter grip in both acceleration and braking on packed snow and ice.



Multi-Purpose Performance Formula

Nano-silica and high-quality rubber tread compounds ensure the tyre's durability even in extreme weather conditions



Safety and Beyond

M+S (Mud + Snow) marked tyres and Three-Peak Mountain Snowflake (3PMSF) tyres deliver winter performance that is legally certified.



Winter EAW81

Designed for excellent winter traction in extreme weather conditions on a variety of surfaces.



SAFETY

3PMSF and M+S mark ensure excellent grip on ice and snow.



CONTROL

Excellent traction and control for all-axle applications.



TOUGHNESS

Excellent anti-wear performance in winter.

Winter EAW81

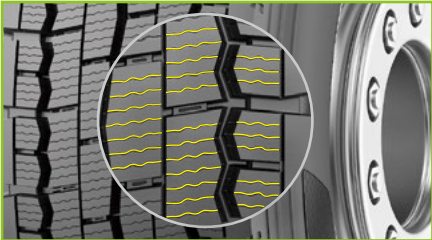
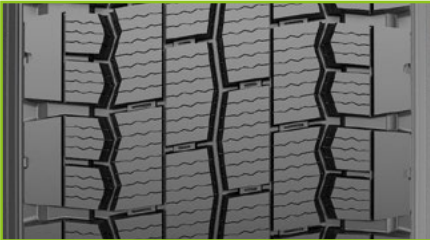


TECHNICAL FEATURES

Optimum arranged blacks prevent the tire from irregular wear on the severe winter road surface.

Intense 3D sipes maximize the traction and braking on the wet and icy surface for better safety.

Unique tread formula designed for severe winter application provides the best level of traction and grip even in extreme temperatures.



SIZE RANGE



Size	PR	LI/SS	Tread Depth (mm)	M+S				
275/70R22.5	16PR	148/145L	20.5	√	√	D	C	74dB B
295/80R22.5	18PR	152/149L	22	√	√	D	C	74dB B
315/70R22.5	18PR	156/150L	20.5	√	√	D	C	74dB B
315/80R22.5	20PR	156/153K	20	√	√	D	C	74dB B

Winter EAW82

Designed for excellent winter traction in extreme weather conditions on a variety of surfaces.



SAFETY

3PMSF and M+S mark ensure excellent grip on ice and snow.



CONTROL

Excellent traction and control for all-axle applications.



TOUGHNESS

Excellent anti-wear performance in winter.

Winter EAW82

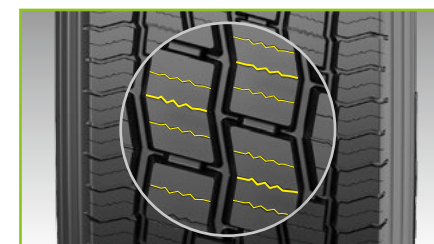


TECHNICAL FEATURES

The 3D-siping technology provides the best traction results a lifetime safety.

Anti-slip blocks provide superior braking and stability on ice and snow surface.





Wider shoulder ribs deliver optimum stability and driver comfort.







SIZE RANGE



Size	PR	LI/SS	Tread Depth (mm)	M+S				
385/65R22.5	24PR	164K	15	√	√	B	B	73dB B

			Size	Pattern	PR	Load Index	Standard Rim	Overall Diameter (mm)	Section Width (mm)	Tread Depth (mm)	M+S					Load		Pressure	
																S(kg)	D(kg)	S(kpa)	D(kpa)
LineRoute	Steer / Trailer	275/70R22.5	ESL01	16	148/145M	8.25	958	276	15	√	√	C	B	71dB	A	3150	2900	900	900
		275/80R22.5		18	149/146L	8.25	1012	276	16	√	√	C	B	71dB	A	3250	3000	900	900
		295/60R22.5		18	150/147L	9.00	926	292	15	√	√	C	B	71dB	A	3350	3075	900	900
		295/80R22.5		18	152/149M	9.00	1044	298	16	√	√	C	B	71dB	A	3550	3250	900	900
		295/80R22.5		18	154/149M	9.00	1044	298	16	√	√	C	B	71dB	A	3550	3250	900	900
		315/70R22.5		18	156/150L	9.00	1014	312	15.5	√	√	C	B	71dB	A	4000	3350	900	900
		315/80R22.5		20	156/153L	9.00	1076	312	16.5	√	√	C	B	71dB	A	4000	3650	850	850
	Drive	295/60R22.5	EDL11	18	150/147L	9.00	926	295	18	√	√	C	C	73dB	A	3350	3075	900	900
		295/80R22.5		18	152/149L	9.00	1044	298	19	√	√	C	C	73dB	A	3550	3250	900	900
		295/80R22.5		18	154/149L	9.00	1044	298	16	√	√	C	C	73dB	A	3550	3250	900	900
		315/70R22.5		18	156/150L	9.00	1014	312	19	√	√	C	C	73dB	A	4000	3350	900	900
		315/80R22.5		20	156/153L	9.00	1076	312	20	√	√	C	C	73dB	A	4000	3650	850	850
	Trailer	385/55R22.5	ETL23	20	160K	12.25	996	386	15	√	√	C	B	72dB	B	4500		900	
		385/65R22.5		20	160K	11.75	1072	389	15.5	√	√	C	B	72dB	B	4500		900	
		385/65R22.5		24	164K	11.75	1072	389	15.5	√	√	C	B	72dB	B	4500		900	
		435/50R19.5	ETL25	20	160J	14.00	931	438	16	√	√	C	B	73dB	C	4500		900	900
		445/45R19.5		20	160J	15.00	859	446	16	√	√	C	B	73dB	C	4500		900	900
MultiRoute	All / Steer	205/75R17.5	EAR30	14	124/122M	6.00	753	205	13	√	√	C	C	73dB	B	1600	1500	750	750
		215/75R17.5		16	135/133L	6.00	767	211	12.5	√	√	C	C	73dB	B	2180	2060	860	860
		235/75R17.5		18	143/141L	6.75	797	233	13	√	√	C	C	73dB	B	2725	2575	860	860
		245/70R19.5		18	144/142J	7.50	839	248	13	√	√	C	C	73dB	B	2800	2650	900	900
		265/70R19.5		18	143/141J	7.50	867	262	13.5	√	√	C	C	73dB	B	2725	2575	900	900
		285/70R19.5		18	150/148K	8.25	895	283	14	√	√	C	C	73dB	B	3550	3150	900	900
	Drive	205/75R17.5	EDR50	14	124/122L	6.00	753	205	15	√	√	D	C	72dB	A	1600	1500	750	750
		215/75R17.5		16	135/133L	6.00	767	211	15	√	√	D	C	72dB	A	2180	2060	860	860
		235/75R17.5		18	143/141L	6.75	797	233	15	√	√	D	C	72dB	A	2725	2575	860	860
		265/70R19.5		18	143/141J	7.50	867	262	15.5	√	√	D	C	72dB	A	2725	2575	900	900
		285/70R19.5		18	150/148K	8.25	895	283	16	√	√	D	C	72dB	A	3350	3150	900	900
		275/80R22.5	EDR51	16	146/143L	8.25	1012	276	22	√	√	Available from Jun. 2022				3000	2725	830	830
		295/60R22.5		18	150/147L	9.00	926	292	19	√	√	D	C	74dB	B	3350	3075	900	900
		295/80R22.5		18	152/149L	9.00	1044	298	22	√	√	D	C	74dB	B	3550	3250	900	900
		295/80R22.5		18	154/149L	9.00	1044	298	22	√	√	D	C	74dB	B	3550	3250	900	900
		315/70R22.5		18	156/150L	9.00	1014	312	20	√	√	D	C	74dB	B	4000	3350	900	900
		315/80R22.5		20	156/153L	9.00	1076	312	22.5	√	√	D	C	74dB	B	4000	3650	850	850
	Trailer	385/65R22.5	ETR31	20	160K	11.75	1072	389	17.5	√	√	Available from Jun. 2022				4500		900	900
		385/65R22.5		24	164K	11.75	1072	389	17.5	√	√					5000		930	930

			Size	Pattern	PR	Load Index	Standard Rim	Overall Diameter (mm)	Section Width (mm)	Tread Depth (mm)	M+S					Load		Pressure	
																S(kg)	D(kg)	S(kpa)	D(kpa)
MixWork	All-Position	13R22.5	EDR60	20	156/150K	9.75	1136	320	20.5	√	√	E	C	77dB	C	4000	3350	900	900
		315/80R22.5		20	156/153K	9.00	1076	312	21	√	√	E	C	77dB	C	4000	3650	850	850
		385/65R22.5	EAM61	20	160K	11.75	1072	389	17.5	√	√	C	C	72dB	B	4500		900	
		385/65R22.5		24	164K	11.75	1072	389	17.5	√	√	C	C	72dB	B	4500		900	
		13R22.5	EAM62	18	154/151K	9.75	1076	312	18	√	√	C	B	72dB	B	3750	3450	830	830
		13R22.5		20	156/150K	9.75	1076	312	18	√	√	C	B	72dB	B	3750	3450	830	830
		315/80R22.5		20	156/153L	9.00	1076	312	17	√	√	C	B	72dB	B	4000	3650	850	850
WinterTyre	All-Position	275/70R22.5	EAW81	16	148/145L	8.25	958	276	20.5	√	√	D	C	74dB	B	3150	2900	900	900
		295/80R22.5		18	152/149L	9	1044	298	22	√	√	D	C	74dB	B	3550	3250	900	900
		315/70R22.5		18	156/150L	9	1014	312	20.5	√	√	D	C	74dB	B	4000	3350	900	900
		315/80R22.5		20	156/153K	9	1076	312	20	√	√	D	C	74dB	B	4000	3650	850	850
		385/65R22.5	EAW82	24	164K	11.75	1072	385	15	√	√	B	B	73dB	B	5000		900	

