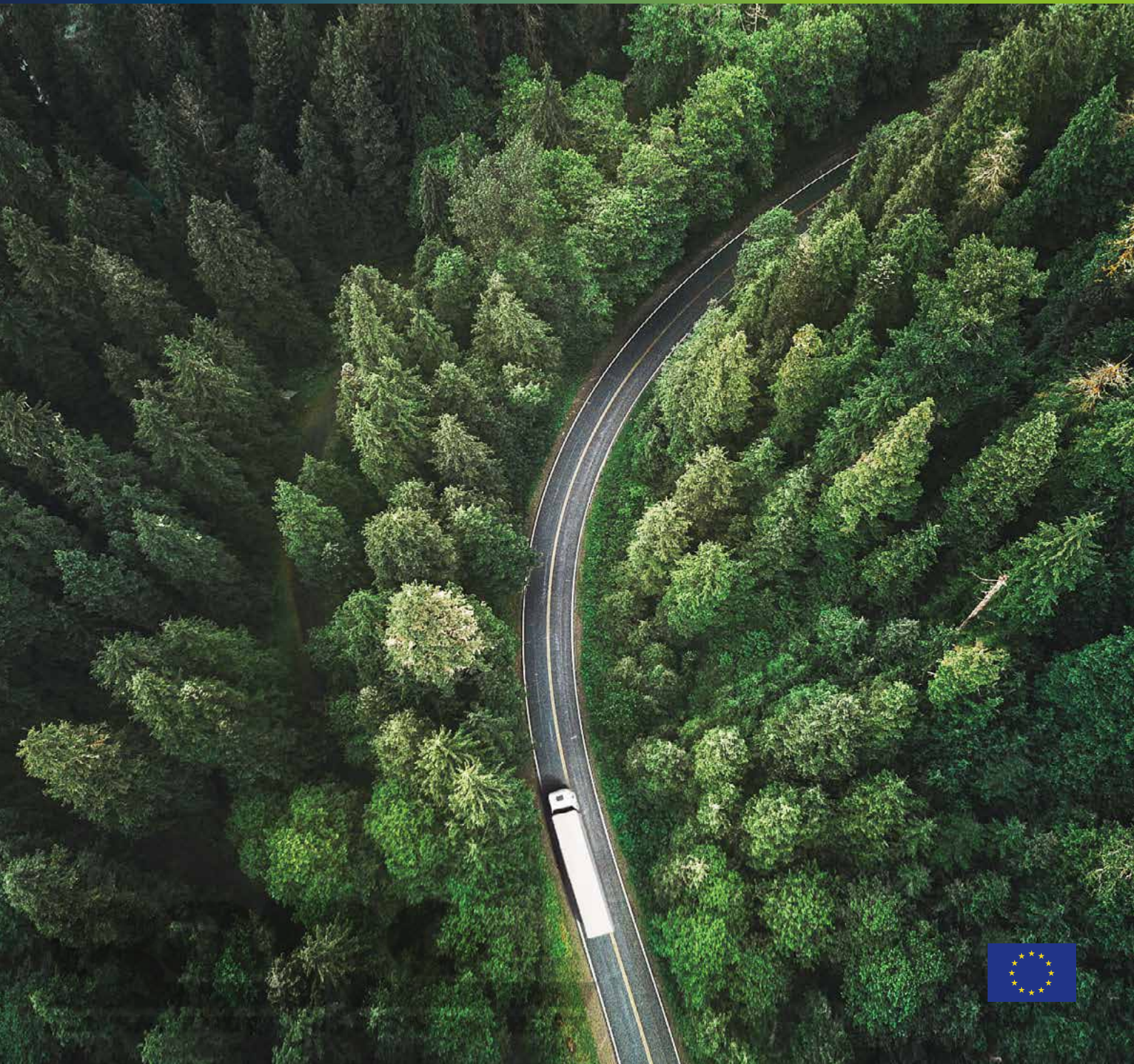


EVERGREEN

drive to the future

TRUCK AND BUS TYRES

PRODUCT CATALOGUE



E+ PES is an advanced technology unique to EVERGREEN tyres that works to enhance key areas of driving experience.



POWER EFFICIENCY SYSTEM



LONGEVITY

Evergreen Tyres have improved tyre durability, wear resistance with reduced risks of potential structural damage during their use. Our tyres feature Responsive Stress Distribution Technology (RSDT), High Conductive Frame Structure (HCFS), and Ultra Anti-Wear Tread Formula (UAWTF) for greater longevity. This combination of technologies maximise the mileage capability which in turn will reduce the tyre replacement expenses and maximise the value of the tyres.

TOUGHNESS

The outstanding toughness of EVERGREEN tyres can assist drivers and truck owners in even the most challenging of work environments, as it was developed with a series of specialized features made to withstand severe conditions.

CONTROL

As the only contact area between vehicle and ground, the tyre is critical to controlling. Using specially developed technologies such as Tread and Shoulder Reinforcement Technology TSRT, Optimized Contact Area Technology (OCAT), and Uniformity and Dynamic Balance Improve Program (UDBIP), our tyres were made to optimize controllability.

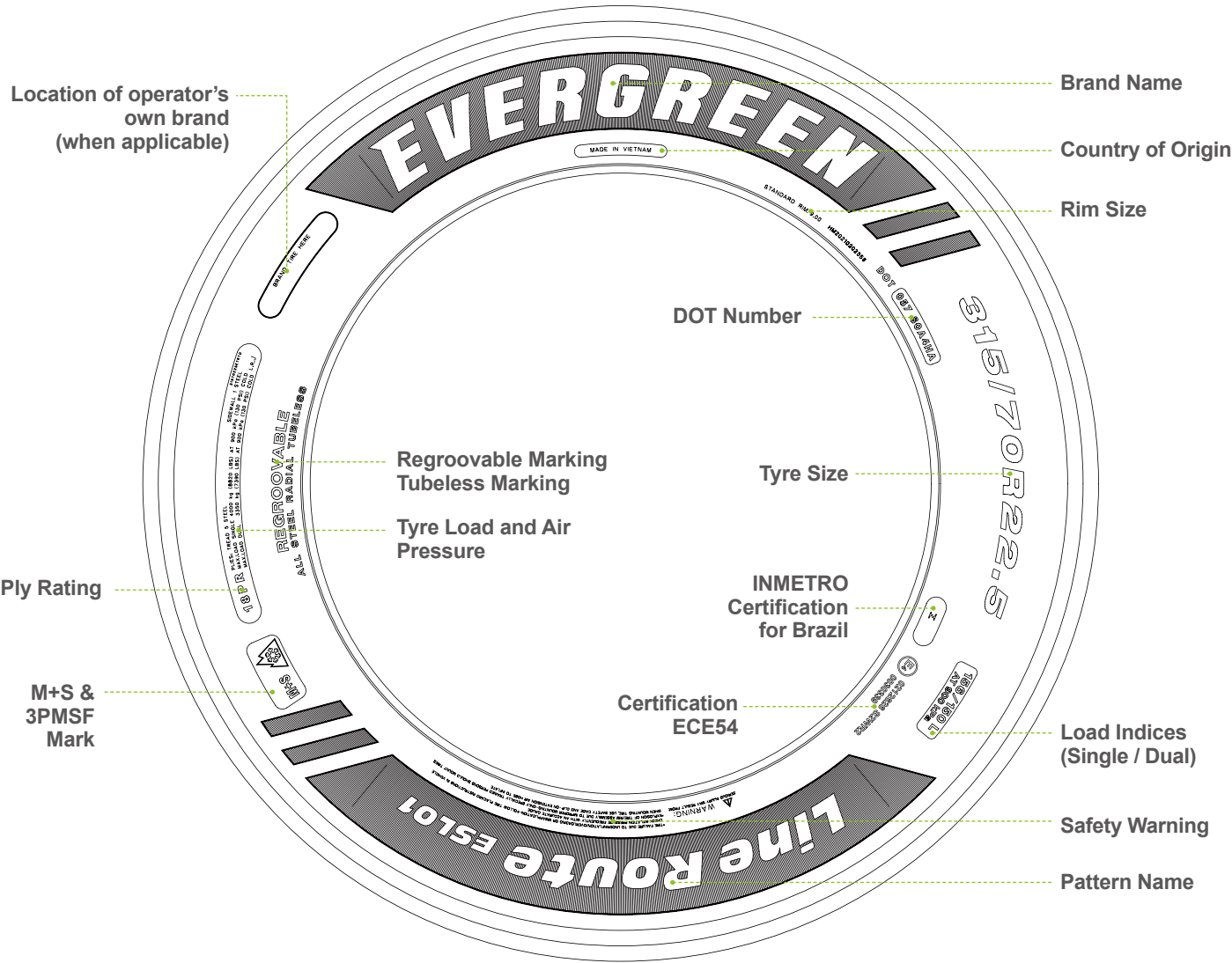
GREEN

Sustainability is at the core of EVERGREEN. In order to do our part in protecting the environment and lowering fuel consumption, we use Nano Silica Uniformity Tech (NSUT), Evergreen Manufacturing Programs (EMP), Ternary alloy wire (TAWI), a Vulcanizing Activator With Low Zinc Content (VALZ), and Low Hysteresis Carbon Black (LHCB) to reduce our carbon footprint.

SAFETY

Safety is the most important quality of any product. To protect our customers, Evergreen has put in place numerous guidelines to ensure that each EVERGREEN tyre is safe. Even in more extreme conditions, our Anti aquaplaning pattern design (AAPD) ensures your safety on wet and icy surfaces.

TYRE SIDEWALL DIAGRAM



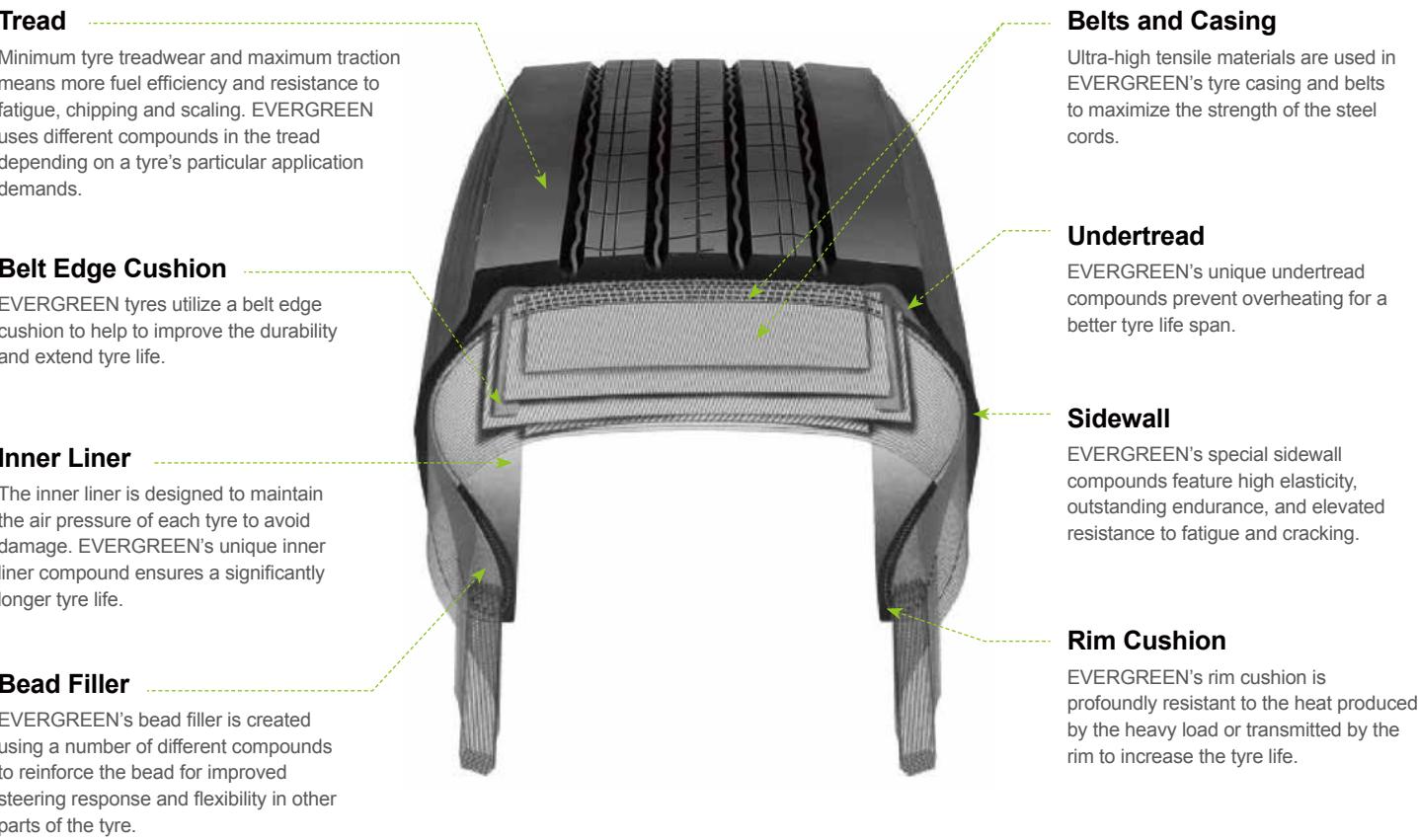
TECHNOLOGIES OF TYRES PROVIDE VALUE

EVERGREEN is constantly striving to create the best solutions for each application. EVERGREEN's commitment to you and the environment ensures cost-effective quality tyres.

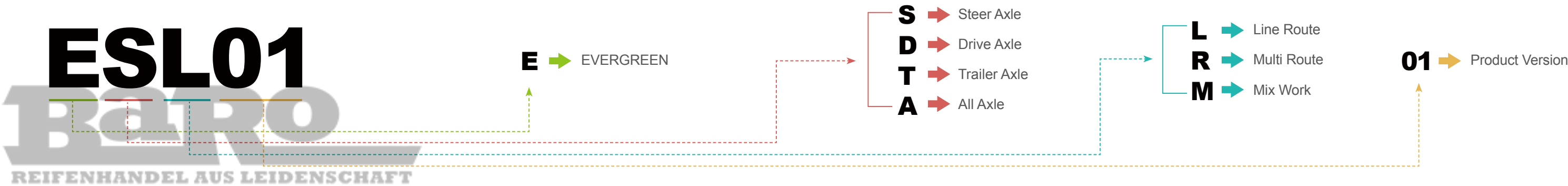
EVERGREEN PHILOSOPHY

EVERGREEN is a brand dedicated to environmental protection and sustainable development through technological advancement. Our values are even reflected in the colors of our logo: Green-evergreen, representing environmental protection; Blue-science and technology, reflecting our advanced design.

Tyre Construction



HOW TO READ THE PROFILE NAME



EVERGREEN, DRIVE TO THE FUTURE

We only have one Earth, and every individual must do their part in caring for it.

EVERGREEN takes this commitment seriously. The spirit of environmental sustainability is embedded in all the tyres we make.

We believe in doing our part to protect the world’s limited resources by developing tyres in a sustainable, responsible way to ensure the health and wellbeing of our future generations.

SERIES	ICON	APPLICATION
LineRoute		<ul style="list-style-type: none">• Long-range travel with consistent speed and less braking or accelerating.• Well paved road surface with fewer curves.
MultiRoute		<ul style="list-style-type: none">• Journeys with repeated braking, acceleration, and turning.• Well-paved road with curves and occasionally rough conditions.
MixWork		<ul style="list-style-type: none">• Both on and off road with aggressive, uneven, or muddy road conditions.• Heavy loads at medium to slow speeds and frequent stopping.
Urban Bus		<ul style="list-style-type: none">• Transportation services such as charter, travel, commuting, and shuttle applications.• Handling challenging road conditions, from long highway miles to tough city streets.
Winter		<ul style="list-style-type: none">• Good ice and snow traction and grip during entire tire lifecycle.• Designed for extreme weather conditions on a variety of surfaces.

CONTENTS

LineRoute

Pg.01 — Pg.10



LineRoute
ESL01 **LineRoute**
EDL11 **LineRoute**
ETL23 **LineRoute**
ETL25

MultiRoute

Pg.11 — Pg.22



MultiRoute
EAR30 **MultiRoute**
EDR50 **MultiRoute**
EDR51 **MultiRoute**
ETR31 **MultiRoute**
EG801

MixWork

Pg.23 — Pg.30



MixWork
EDM60 **MixWork**
EAM61 **MixWork**
EAM62

Urban Bus

Pg.31 — Pg.34



Urban Bus
EAU91

Winter

Pg.35 — Pg.40



Winter **EDW85** **Winter** **EAW86**

The LineRoute Series



LineRoute
ESL01

LineRoute
EDL11

LineRoute
ETL23

LineRoute
ETL25



Ultra Anti-Wear Tread

Superior wear resistance with high-structure reinforcement and the latest coupling materials.



Responsive Stress Distribution Technology

Top-rated safety is guaranteed with this technology, which can disperse the ground pressure efficiently for extended and high-speed driving.



Energy-Saving Structure and Formula

The well-designed formula and structure minimize hysteresis loss of the tyre and optimizes its fuel-saving performance.

LineRoute ESL01

The latest generation of high performance steering tyre for national and regional operations.



LONGEVITY

Remarkably high mileage performance on highway and regional use



SAFETY

Maximum safety and steering stability thanks to the new generation of structure design and strict quality control regulations.



GREEN

Fuel-saving design for fewer CO₂ emissions and lower operating cost.

LineRoute **ESL01**

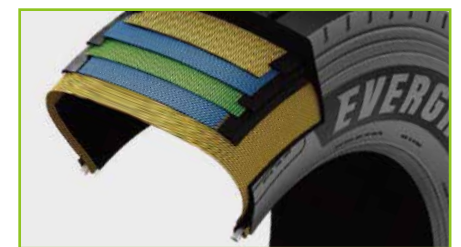


TECHNICAL FEATURES

Advanced silica-rich cap and base compounds provide maximized mileage and minimized fuel consumption.

The latest wave-shape groove design improves the steering accuracy while also ensuring fast reaction response during accelerating.

By optimizing the outline structure, each unit area of the tread can receive the pressure of the vehicle evenly to improve the wear performance.



SIZE RANGE



Size	PR	LI/SS	Tread Depth (mm)	M+S					
275/70R22.5	16PR	148/145M	15	√	√	C	B	71dB	A
275/80R22.5	18PR	149/146L	16	√	√	C	B	71dB	A
295/60R22.5	18PR	150/147L	15	√	√	C	B	71dB	A
295/80R22.5	18PR	154/149M	16	√	√	C	B	71dB	A
315/70R22.5	18PR	156/150L	15.5	√	√	C	B	71dB	A
315/80R22.5	20PR	156/153L	16.5	√	√	C	B	71dB	A

LineRoute EDL11

The latest generation of high-performance drive tyre for national and regional operations.



SAFETY

Best-in-class durability for extended and high-speed driving.



LONGEVITY

Excellent mileage for long-haul and regional use.



GREEN

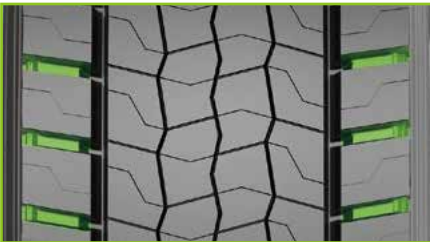
Designed to minimize CO₂ emission and fuel costs.

LineRoute **EDL11**

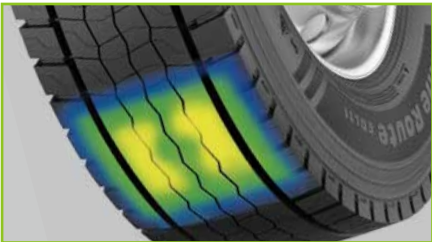


TECHNICAL FEATURES

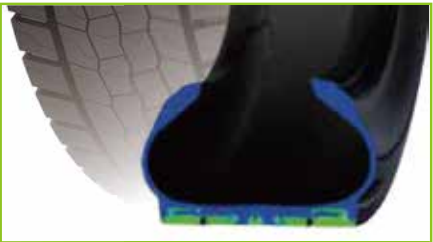
The wider shoulder lugs enhance traction and water drainage.



The highly effective contact area separates loading pressure evenly for better mileage performance.



Optimized compressive stiffness minimizes deformation and energy losses to reduce fuel consumption.



SIZE RANGE

▲ Recommend 

Size	PR	LI/SS	Tread Depth (mm)	M+S					
295/60R22.5	18PR	150/147L	18	√	√	C	C	73dB	A
295/80R22.5	18PR	154/149L	19	√	√	C	C	73dB	A
315/70R22.5	18PR	156/150L	19	√	√	C	C	73dB	A
315/80R22.5	20PR	156/153L	20	√	√	C	C	73dB	A



LineRoute ETL23

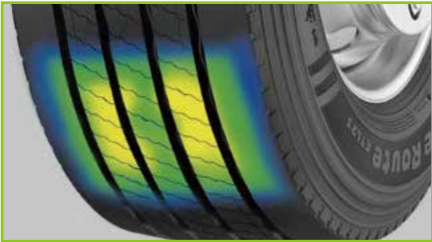
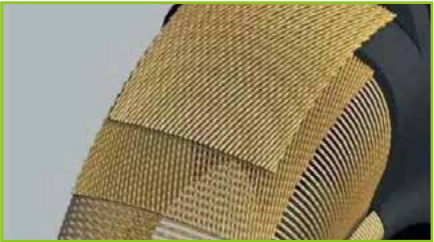


TECHNICAL FEATURES

Ultra-tensile cord incorporated into the body material for excellent durability and retreadability.

The highly effective contact area separates loading pressure evenly for better mileage performance.

The latest silica-rich formula and cutting edge mixing technology ensure excellent tyre longevity and low rolling resistance.



LineRoute ETL23

The latest generation of high-performance trailer tyre for national and regional operations.



LONGEVITY

Up to 20% more mileage compared to competitors.



GREEN

Improved rolling resistance for minimized fuel consumption.



SAFETY

3PMSF and M+S mark ensures excellent grip all year round.

SIZE RANGE

▲ Recommend
△ Allow



Size	PR	LI/SS	Tread Depth (mm)	M+S					
385/55R22.5	20PR	160K	15	√	√	C	B	72dB	B
385/65R22.5	20PR	160K	15.5	√	√	C	B	72dB	B
385/65R22.5	24PR	164K	15.5	√	√	C	B	72dB	B

LineRoute ETL25

The latest generation of high-performance trailer tyre for national and regional operations.



LONGEVITY

Up to 20% more mileage compared to competitors.



GREEN

Improved rolling resistance for minimized fuel consumption.



SAFETY

3PMSF and M+S mark ensures excellent grip all year round.

LineRoute ETL25

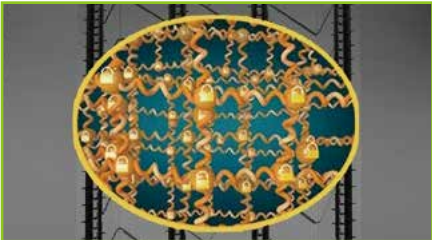


TECHNICAL FEATURES

Wide tread and 4 straight grooves provides excellent handling, traction and safety.

Optimized wear-resistant tread compound provides extra-long miles.

Unique tyre shoulder design reduces irregular wear and delivers excellent mileage performance.



SIZE RANGE



Size	PR	LI/SS	Tread Depth (mm)	M+S					
435/50R19.5	20PR	160J	12.5	√	√	C	B	73dB	C
445/45R19.5	20PR	160J	13	√	√	C	B	73dB	C
425/65R22.5	20PR	165K	15.5	√	√	C	B	73dB	A

The MultiRoute Series



MultiRoute
EAR30

MultiRoute
EDR50

MultiRoute
EDR51

MultiRoute
ETR31

MultiRoute
EG801



Multi-Purpose Performance Formula

Nano-silica and high-quality natural rubber tread compounds ensure the tyre's durability on long-haul and regional road conditions.



Shoulder Rigidity Reinforced Design

By optimizing the overall material distribution of the tyre, the rigidity and handling stability of the tyre is has been greatly improved.



Ultra-High Tensile Cord

The UHT carcass cords provide better anti-deformation performance for the tyre, while at the same time better dispersing the pressure and significantly increasing the safety performance of the tyre.



MultiRoute EAR30

The latest generation of high-performance all-position tyre for national and regional operations.



LONGEVITY

Excellent life span on well paved road surfaces.



SAFETY

Great stability for all axle positions applications.



CONTROL

Good wet and dry maneuverability, especially with repeated braking or accelerating traffic conditions.

MultiRoute EAR30

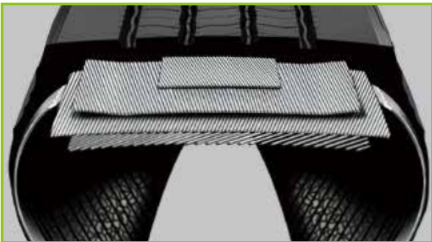


TECHNICAL FEATURES

The optimized pattern design improves both dry and wet handling in changing regional traffic conditions.

The high, rigid belt structure enhances driving stability.

The enhanced tread formula ensures long tread life and excellent cut or chip resistance.



SIZE RANGE



Size	PR	LI/SS	Tread Depth (mm)	M+S				
205/75R17.5	14PR	124/122M	13	√	√	C	C	73dB B
215/75R17.5	16PR	135/133L	12.5	√	√	C	C	73dB B
235/75R17.5	16PR	132/130M	13	√	√	C	C	73dB B
235/75R17.5	18PR	143/141L	13	√	√	C	C	73dB B
245/70R19.5	18PR	144/142J	13	√	√	C	C	73dB B
265/70R19.5	18PR	143/141J	13.5	√	√	C	C	73dB B
285/70R19.5	18PR	150/148K	14	√	√	C	C	73dB B
295/80R22.5	18PR	154/149M	15.5	√	√	C	C	73dB B

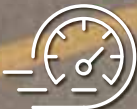


MultiRoute EDR50



MultiRoute EDR50

The latest generation of high- performance drive tyre for national and regional operations.



LONGEVITY

Long mileage performance for lower operating cost.



SAFETY

Great durability for Challenging or unexpected conditions on paved-road surfaces.



CONTROL

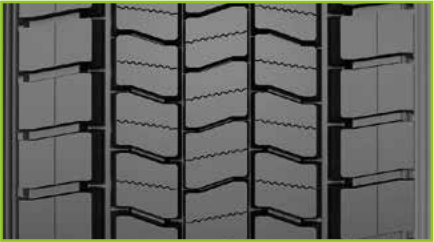
Outstand traction for long-haul, regional and urban use.

TECHNICAL FEATURES

The unique pattern design enhances wet and dry grip, as well as water drainage.





The Silicon-rich tread compound ensures strong links in the polymer network for high abrasion resistance.

Regular pressure distribution ensures higher mileage potential.



SIZE RANGE

▲ Recommend 

Size	PR	LI/SS	Tread Depth (mm)	M+S					
205/75R17.5	14PR	124/122L	15	√	√	D	C	72dB	A
215/75R17.5	16PR	135/133L	15	√	√	D	C	72dB	A
235/75R17.5	18PR	143/141L	15	√	√	D	C	72dB	A
265/70R19.5	18PR	143/141J	15.5	√	√	D	C	72dB	A
285/70R19.5	18PR	150/148K	16	√	√	D	C	72dB	A

MultiRoute EDR51

The latest generation of high-performance drive tyre for national and regional operations.



LONGEVITY

Long life span and low rolling resistance to lower tyre and fuel expenses.



SAFETY

Excellent stability and durability, even in challenging weather conditions.



CONTROL

Excellent wet and dry grip even in low temperatures.

MultiRoute EDR51



TECHNICAL FEATURES

The unique pattern ensures the fuel efficiency and even wear for lower operation costs.





The tread formula ensures grip and traction in low temperature environments.

The low deformation frame structure ensures long-term stability and durability for increased safety.



SIZE RANGE

▲ Recommend 

Size	PR	LI/SS	Tread Depth (mm)	M+S				
275/80R22.5	18PR	149/146L	22	√	√			
295/60R22.5	18PR	150/147L	19	√	√	D	C	74dB B
295/80R22.5	18PR	154/149L	22	√	√	D	C	74dB B
315/70R22.5	18PR	156/150L	20	√	√	D	C	74dB B
315/80R22.5	20PR	156/153L	22.5	√	√	D	C	74dB B



MultiRoute ETR31

The latest generation of high-performance trailer tyre for national and regional operations.



LONGEVITY

Up to 20% more mileage compared to competitors.



GREEN

Improved rolling resistance for minimized fuel consumption.



SAFETY

3PMSF and M+S mark ensures excellent grip all year round.

MultiRoute ETR31

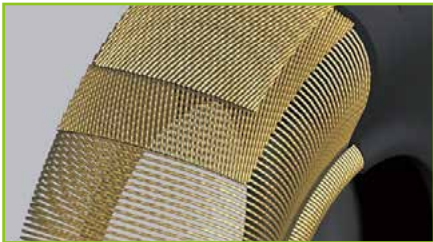
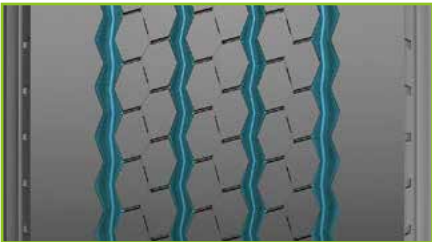
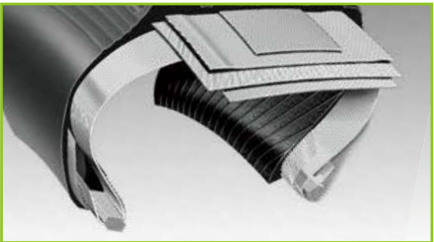


TECHNICAL FEATURES

Optimized wide tread and four-belt design improves longevity and enhances retreadability.

Increased tread depth and rectangle footprint promote even wear and mileage potential.

High conductive cord accelerates heat transition which helps lower rolling resistance and increases fuel efficiency.



SIZE RANGE

▲ Recommend
△ Allow



Size	PR	LI/SS	Tread Depth (mm)	M+S				
385/65R22.5	24PR	164K	17.5	√	√	C	C	72dB B



MultiRoute EG801

Designed for paved road service applications with better traction and durability.



LONGEVITY

Up to 20% more mileage compared to competitors.



SAFETY

3PMSF and M+S mark ensures excellent grip all year round.



TOUGHNESS

Excellent cut and chip resistance for challenging workplace application.

MultiRoute EG801

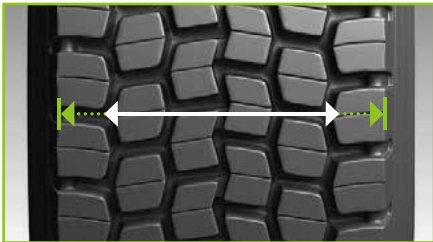


TECHNICAL FEATURES

Deep tread depth improves traction and grip on the road and extends tire life.

Optimized deep multi-blocks pattern design provides ultra driving force.

Widened tread width enhances driving stability and provides even pressure distribution.



SIZE RANGE

▲ Recommend

Size	PR	LI/SS	Tread Depth (mm)	M+S				
315/80R22.5	20PR	156/153L	24.5	√	√	D	C	75dB B

The MixWork Series



MixWork
EDM60

MixWork
EAM61

MixWork
EAM62



Extra Reinforced Bead Structure

The reinforced bead design allows the tyre to adapt to harsh working environments.



Specialized Tread Reinforcement Formula

Highly dispersed nano-silica and high-strength rubber blended to an optimal ratio maximize the safety of tyres on harsh roads.



Ternary Alloy Wire

Special TAWI cord with ultra-high tensile strength reduces the rubber aging and significantly increases the tyre's service life in harsh road conditions.

MixWork EDM60

The latest generation of high-performance drive tyre for on and off operations.



TOUGHNESS

Excellent cut and chip resistance for challenging workplace application.



LONGEVITY

Long lasting and durable structure for extended tyre life span.



CONTROL

Outstanding traction for all on & off surface.

MixWork EDM60

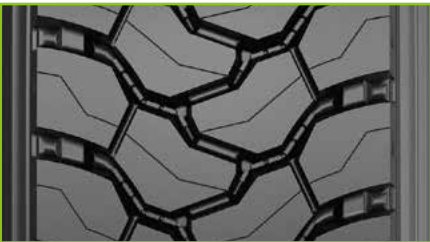
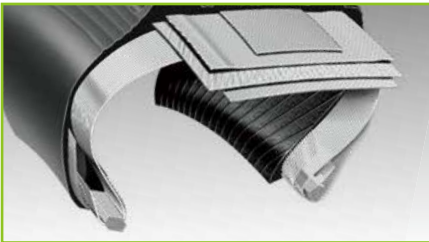


TECHNICAL FEATURES

Exceptional resistance to damage by compounds with advanced resistance for tread to cuts and tears.

Durable casing design for maximum service life in demanding mixed work use.

Latest pattern designed for maximized traction in harshest terrain.



SIZE RANGE



Size	PR	LI/SS	Tread Depth (mm)	M+S	▲	▲	▲	▲
13R22.5	20PR	156/150K	20.5	√	POR			
295/80R22.5	18PR	152/149K	17.5	√	POR			
315/80R22.5	20PR	156/153K	21	√	POR			

MixWork EAM61

The latest generation of high-performance all-position tyre for on and off operations.



TOUGHNESS

Highly cut, chip, and abrasion resistant on paved and unpaved road surfaces.



LONGEVITY

Enhanced structure for a lasting life span.



CONTROL

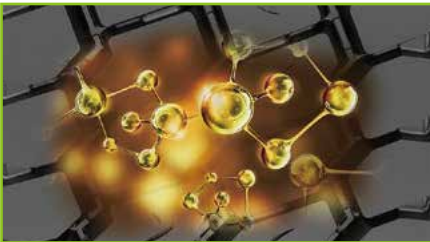
Outstanding grip and stability on both on and off terrain for all-axle use.

MixWork EAM61

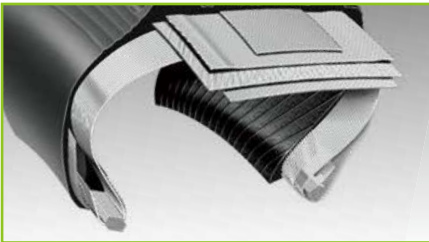


TECHNICAL FEATURES

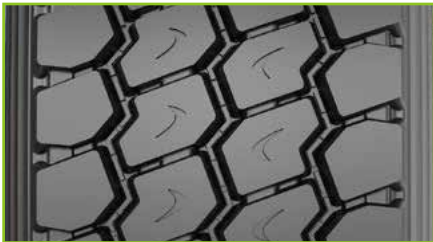
A special formula developed for abrasion resistance and anti-cut and chip capability for on and off terrain.



A frame structure reinforced with UHT cord ensures a long life span.







A state-of-the-art wide-base pattern design with great control capability for on and off application.



SIZE RANGE

▲ Recommend 

Size	PR	LI/SS	Tread Depth (mm)	M+S				
385/65R22.5	20PR	160K	17.5	√	√	C	C	72dB B
385/65R22.5	24PR	164K	17.5	√	√	C	C	72dB B

MixWork EAM62

The latest generation of high-performance all-position tyre for on/off operations.



TOUGHNESS

Excellent anti-wear performance and cut and chip resistance for paved roads and work sites.



LONGEVITY

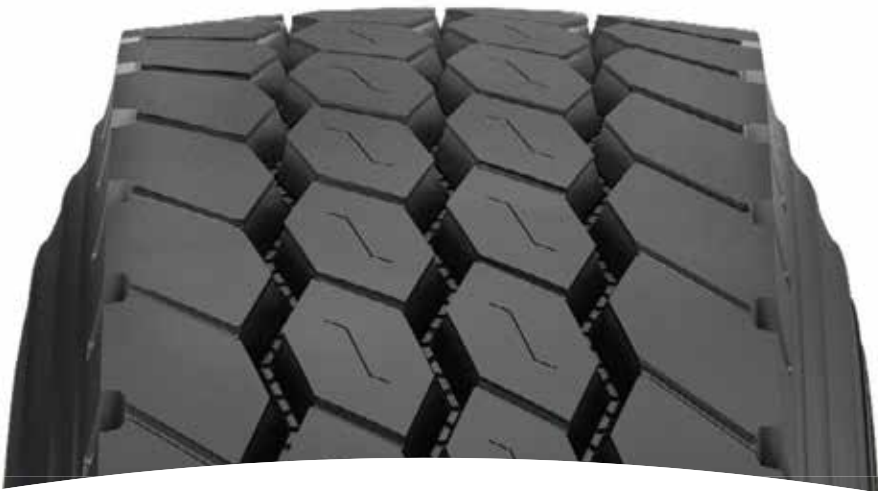
Improved structure for better durability and longer tyre life span.



CONTROL

Excellent traction and control for all-axle applications.

MixWork EAM62

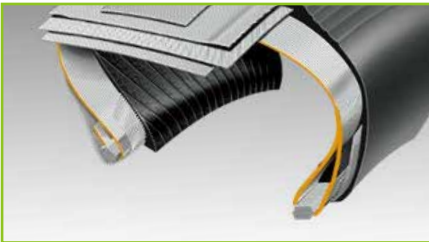


TECHNICAL FEATURES

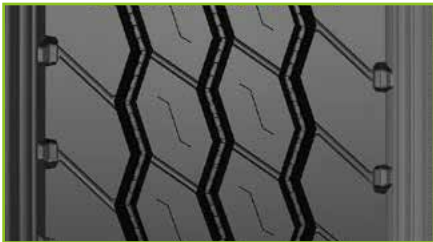
The latest tread compound is used for outstanding mileage and resistance for high-scrub applications.



The reinforced bead construction provides excellent structural durability to extend tyre life.



A unique 4-ribbed zip-zag design provides outstanding handling for all-axle applications.



SIZE RANGE



Size	PR	LI/SS	Tread Depth (mm)	M+S					
13R22.5	20PR	156/150K	18	√	√	C	B	72dB	B
315/80R22.5	20PR	156/153L	17	√	√	C	B	72dB	B

The Urban Bus Series



Urban Bus **EAU91**



Sidewall Protection

The design of the anti-scratch protective strip on the sidewall can effectively resist the sidewall damage caused by side stops of the bus.



Exclusive Tread Formula

Low heat generation and high wear resistance tread formula specially used for urban bus series, prolongs the product's service life.



3D Sipe Technology

The design of the new 3D sipes improves the grip performance on icy, snowy, and slippery roads, ensuring the safety performance of the bus.

Urban Bus EAU91

The high-safety and wear-resistant urban bus tires



LONGEVITY

Long life span and low rolling resistance to lower tyre and fuel expenses.



SAFETY

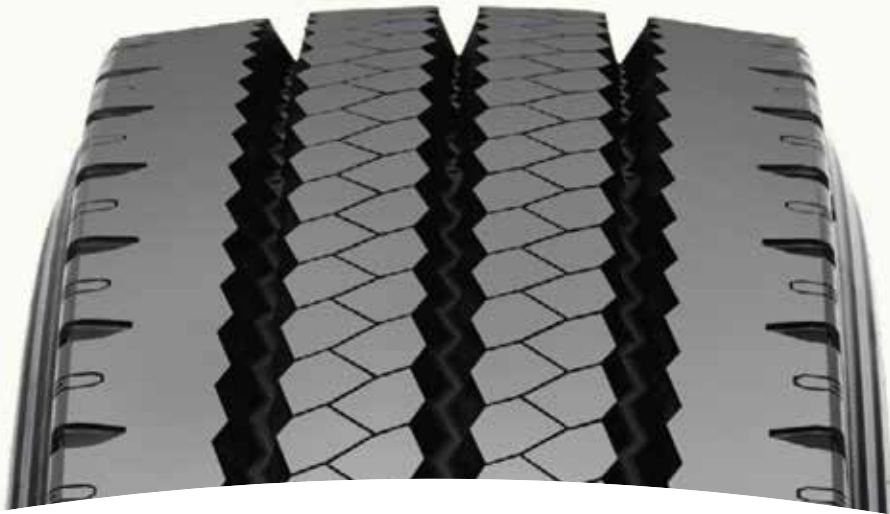
Excellent stability and durability, even in challenging weather conditions.



CONTROL

Excellent wet and dry grip even in low temperatures.

Urban Bus EAU91

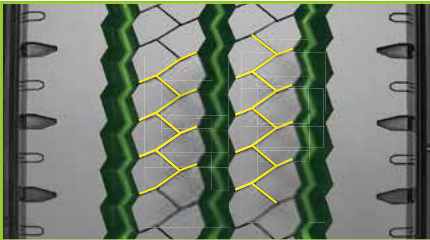


TECHNICAL FEATURES

The optimized tread zigzag pattern groove design supplemented by 3D sipes provides excellent driving and braking capabilities to ensure the safety performance of the bus.

Low heat generation and high wear resistance tread formula specially used for public transport prolongs the product's service life and increases the tire's mileage.

The design of the anti-scratch protective strip on the sidewall can effectively resist the sidewall damage caused by side stops and improve the service life of the tire.



SIZE RANGE

▲ Recommend

Size	PR	LI/SS	Tread Depth (mm)	M+S				
275/70R22.5	18PR	152/148J	20.5	√	√	C	C	72dB B

The Winter Series



Winter **EDW85**

Winter **EAW86**



Advanced Siping Technology

Effective 3D siping technology improves winter grip in both acceleration and braking on packed snow and ice.



Multi-Purpose Performance Formula

Nano-silica and high-quality rubber tread compounds ensure the tyre's durability even in extreme weather conditions



Safety and Beyond

M+S (Mud + Snow) marked tyres and Three-Peak Mountain Snowflake (3PMSF) tyres deliver winter performance that is legally certified.



Winter EDW85

Designed for excellent winter traction in extreme weather conditions on a variety of surfaces.



SAFETY

3PMSF and M+S mark ensure excellent grip on ice and snow.



CONTROL

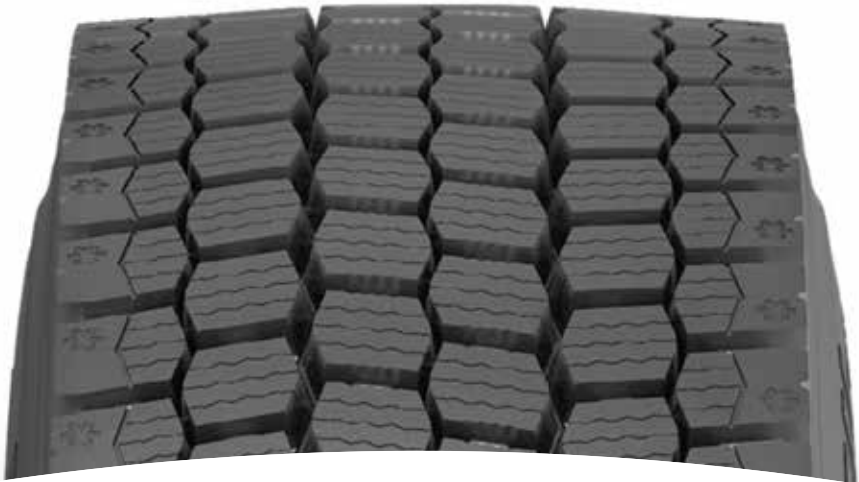
Excellent traction and control for all-axle applications.



TOUGHNESS

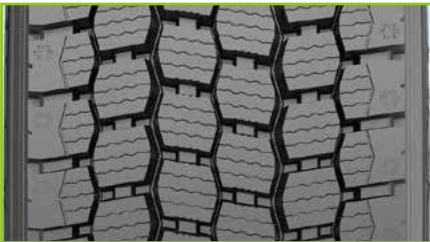
Excellent anti-wear performance in winter.

Winter EDW85

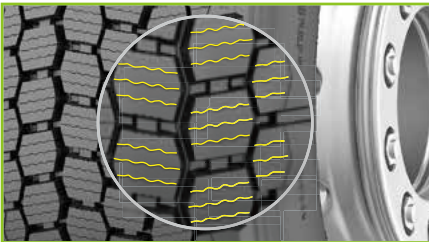


TECHNICAL FEATURES

Optimum arranged blocks prevent the tyre from irregular wear on the severe winter road surface.



Intense 3D sipes maximize the traction and braking on the wet and icy surface for better safety.



Unique tread formula designed for severe winter application provides the best level of traction and grip even in extreme temperatures.



SIZE RANGE



Size	PR	LI/SS	Tread Depth (mm)	M+S					
275/70R22.5	16PR	148/145L	20.5	√	√	D	C	74dB	B
295/80R22.5	18PR	152/149L	22	√	√	D	C	74dB	B
315/70R22.5	18PR	156/150L	20.5	√	√	D	C	74dB	B
315/80R22.5	20PR	156/153K	20	√	√	D	C	74dB	B

Winter EAW86

Designed for excellent winter traction in extreme weather conditions on a variety of surfaces.



SAFETY

3PMSF and M+S mark ensure excellent grip on ice and snow.



CONTROL

Excellent traction and control for all-axle applications.



TOUGHNESS

Excellent anti-wear performance in winter.

Winter EAW86

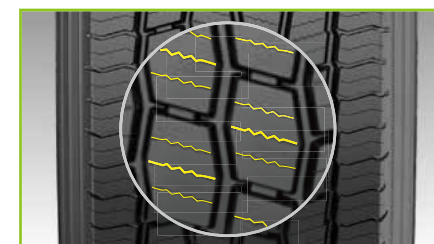


TECHNICAL FEATURES

The 3D-siping technology provides the best traction results driving safety.

Anti-slip blocks provide superior braking and stability on ice and snow surface.

Wider shoulder ribs deliver optimum stability and driver comfort.












SIZE RANGE

▲ Recommend
△ Allow



Size	PR	LI/SS	Tread Depth (mm)	M+S	3PMSF	TPMS	TPMS	TPMS	TPMS
385/65R22.5	24PR	164K	15.5	√	√	B	B	73dB	B

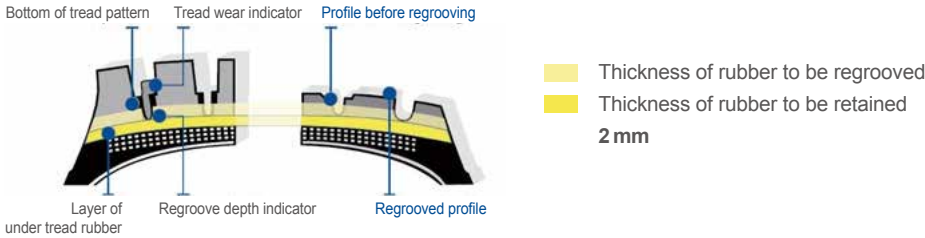
Series	Position	Size	Pattern	PR	Load Index	Standard Rim	Overall Diameter (mm)	Section Width (mm)	Tread Depth (mm)	M+S					Load		Pressure		
															S(kg)	D(kg)	S(kpa)	D(kpa)	
LineRoute	Steer / Trailer	275/70R22.5	ESL01	16	148/145M	8.25	958	276	15	√	√	C	B	71dB	A	3150	2900	900	900
		275/80R22.5		18	149/146L	8.25	1012	276	16	√	√	C	B	71dB	A	3250	3000	900	900
		295/60R22.5		18	150/147L	9.00	926	292	15	√	√	C	B	71dB	A	3350	3075	900	900
		295/80R22.5		18	154/149M	9.00	1044	298	16	√	√	C	B	71dB	A	3550	3250	900	900
		315/70R22.5		18	156/150L	9.00	1014	312	15.5	√	√	C	B	71dB	A	4000	3350	900	900
		315/80R22.5		20	156/153L	9.00	1076	312	16.5	√	√	C	B	71dB	A	4000	3650	850	850
	Drive	295/60R22.5	EDL11	18	150/147L	9.00	926	295	18	√	√	C	C	73dB	A	3350	3075	900	900
		295/80R22.5		18	154/149L	9.00	1044	298	19	√	√	C	C	73dB	A	3550	3250	900	900
		315/70R22.5		18	156/150L	9.00	1014	312	19	√	√	C	C	73dB	A	4000	3350	900	900
		315/80R22.5		20	156/153L	9.00	1076	312	20	√	√	C	C	73dB	A	4000	3650	850	850
	Trailer	385/55R22.5	ETL23	20	160K	12.25	996	386	15	√	√	C	B	72dB	B	4500		900	
		385/65R22.5		20	160K	11.75	1072	389	15.5	√	√	C	B	72dB	B	4500		900	
		385/65R22.5		24	164K	11.75	1072	389	15.5	√	√	C	B	72dB	B	4500		900	
		435/50R19.5	ETL25	20	160J	14.00	931	438	12.5	√	√	C	B	73dB	C	4500		900	
		445/45R19.5		20	160J	15.00	859	446	13	√	√	C	B	73dB	C	4500		900	
		425/65R22.5		20	165K	12.25	1124	422	15.5	√	√	C	B	73dB	A	5150		830	
MultiRoute	All / Steer	205/75R17.5	EAR30	14	124/122M	6.00	753	205	13	√	√	C	C	73dB	B	1600	1500	750	750
		215/75R17.5		16	135/133L	6.00	767	211	12.5	√	√	C	C	73dB	B	2180	2060	860	860
		235/75R17.5		16	132/130M		797	233	13	√	√	C	C	73dB	B	2000	1900	760	760
		235/75R17.5		18	143/141L	6.75	797	233	13	√	√	C	C	73dB	B	2725	2575	860	860
		245/70R19.5		18	144/142J	7.50	839	248	13	√	√	C	C	73dB	B	2800	2650	900	900
		265/70R19.5		18	143/141J	7.50	867	262	13.5	√	√	C	C	73dB	B	2725	2575	900	900
		285/70R19.5		18	150/148K	8.25	895	283	14	√	√	C	C	73dB	B	3550	3150	900	900
		295/80R22.5		18	154/149M	9.00	1044	298	15.5	√	√	C	C	73dB	B	3750	3250	900	900
	Drive	205/75R17.5	EDR50	14	124/122L	6.00	753	205	15	√	√	D	C	72dB	A	1600	1500	750	750
		215/75R17.5		16	135/133L	6.00	767	211	15	√	√	D	C	72dB	A	2180	2060	860	860
		235/75R17.5		18	143/141L	6.75	797	233	15	√	√	D	C	72dB	A	2725	2575	860	860
		265/70R19.5		18	143/141J	7.50	867	262	15.5	√	√	D	C	72dB	A	2725	2575	900	900
		285/70R19.5		18	150/148K	8.25	895	283	16	√	√	D	C	72dB	A	3350	3150	900	900
		275/80R22.5	EDR51	16	146/143L	8.25	1012	276	22	√	√					3000	2725	830	830
		295/60R22.5		18	150/147L	9.00	926	292	19	√	√	D	C	74dB	B	3350	3075	900	900
		295/80R22.5		18	154/149L	9.00	1044	298	22	√	√	D	C	74dB	B	3550	3250	900	900
315/70R22.5	18	156/150L		9.00	1014	312	20	√	√	D	C	74dB	B	4000	3350	900	900		
315/80R22.5	20	156/153L		9.00	1076	312	22.5	√	√	D	C	74dB	B	4000	3650	850	850		
Trailer	315/80R22.5	EG801	20	156/153L	9.00	1076	312	24.5	√	√	D	C	75dB	B	4000	3650	850	850	
	385/65R22.5	ETR31	24	164K	11.75	1072	389	17.5	√	√	C	C	72dB	B	5000		930		

Series	Position	Size	Pattern	PR	Load Index	Standard Rim	Overall Diameter (mm)	Section Width (mm)	Tread Depth (mm)	M+S						Load		Pressure	
																S(kg)	D(kg)	S(kpa)	D(kpa)
MixWork	All-Position	13R22.5	EDR60	20	156/150K	9.75	1136	320	20.5	√	POR					4000	3350	900	900
		295/80R22.5		18	152/149K	9.00	1044	298	17.5	√	POR					3550	3250	900	900
		315/80R22.5		20	156/153K	9.00	1076	312	21	√	POR					4000	3650	850	850
		385/65R22.5	EAM61	20	160K	11.75	1072	389	17.5	√	√	C	C	72dB	B	4500		900	
		385/65R22.5		24	164K	11.75	1072	389	17.5	√	√	C	C	72dB	B	4500		900	
		13R22.5	EAM62	20	156/150K	9.75	1076	312	18	√	√	C	B	72dB	B	3750	3450	830	830
		315/80R22.5		20	156/153L	9.00	1076	312	17	√	√	C	B	72dB	B	4000	3650	850	850
Urban Bus	All-Position	275/70R22.5	EAU91	18	152/148J	8.25	958	276	20.5	√	√	C	C	72dB	B	3550	3250	900	900
WinterTyre	Drive	275/70R22.5	EDW85	16	148/145L	8.25	958	276	20.5	√	√	D	C	74dB	B	3150	2900	900	900
		295/80R22.5		18	152/149L	9	1044	298	22	√	√	D	C	74dB	B	3550	3250	900	900
		315/70R22.5		18	156/150L	9	1014	312	20.5	√	√	D	C	74dB	B	4000	3350	900	900
		315/80R22.5		20	156/153K	9	1076	312	20	√	√	D	C	74dB	B	4000	3650	850	850
	All-Position	385/65R22.5	EAW86	24	164K	11.75	1072	385	15.5	√	√	B	B	73dB	B	5000		900	




WHY REGROOVING ?

- More Grip
- More Fuel Savings
- More Safety
- More Longevity



LineRoute




**LineRoute
ESL01**

Pattern when new

Pattern when 70% worn

Pattern after regrooved

Size	Dimension Of Regroove	
	Depth	Width
11R24.5	2mm	6-8mm
275/70R22.5	2mm	6-8mm
275/80R22.5	2mm	6-8mm
295/60R22.5	2mm	6-8mm
295/75R22.5	2mm	6-8mm
295/80R22.5	2mm	6-8mm
315/70R22.5	2mm	6-8mm
315/80R22.5	2mm	6-8mm




**LineRoute
EDL11**

Pattern when new

Pattern when 70% worn

Pattern after regrooved

Size	Dimension Of Regroove	
	Depth	Width
295/60R22.5	2mm	6-8mm
295/80R22.5	2mm	6-8mm
315/70R22.5	2mm	6-8mm
315/80R22.5	2mm	6-8mm




**LineRoute
ETL23**

Pattern when new

Pattern when 70% worn

Pattern after regrooved

Size	Dimension Of Regroove	
	Depth	Width
385/55R22.5	2mm	6-8mm
385/65R22.5	2mm	6-8mm



**LineRoute
ETL25**


Pattern when new

Pattern when 70% worn

Pattern after regrooved

Size	Dimension Of Regroove	
	Depth	Width
385/55R22.5	2mm	6-8mm
425/65R22.5	2mm	6-8mm
435/50R19.5	2mm	6-8mm
445/45R19.5	2mm	6-8mm

MixWork




**MixWork
EDM60**

Pattern when new

Pattern when 70% worn

Pattern after regrooved

Size	Dimension Of Regroove	
	Depth	Width
12R22.5	2mm	6-8mm
13R22.5	2mm	6-8mm
295/80R22.5	2mm	6-8mm
315/80R22.5	2mm	6-8mm




**MixWork
EAM61**

Pattern when new

Pattern when 70% worn

Pattern after regrooved

Size	Dimension Of Regroove	
	Depth	Width
385/65R22.5	2mm	6-8mm



**MixWork
EAM62**


Pattern when new

Pattern when 70% worn

Pattern after regrooved

Size	Dimension Of Regroove	
	Depth	Width
13R22.5	2mm	6-8mm
315/80R22.5	2mm	6-8mm

Urban Bus



**Urban Bus
EAU91**


Pattern when new

Pattern when 70% worn

Pattern after regrooved

Size	Dimension Of Regroove	
	Depth	Width
11R22.5	2mm	6-8mm
275/70R22.5	2mm	6-8mm
305/70R22.5	2mm	6-8mm

MultiRoute




**MultiRoute
EAR30**

Pattern when new

Pattern when 70% worn

Pattern after regrooved

Size	Dimension Of Regroove	
	Depth	Width
205/75R17.5	1.6mm	5-7mm
215/75R17.5	1.6mm	5-7mm
225/70R19.5	1.6mm	5-7mm
235/75R17.5	1.6mm	5-7mm
245/70R19.5	1.6mm	5-7mm
265/70R19.5	1.6mm	5-7mm
285/70R19.5	1.6mm	5-7mm
295/80R22.5	2mm	6-8mm




**MultiRoute
EDR50**

Pattern when new

Pattern when 70% worn

Pattern after regrooved

Size	Dimension Of Regroove	
	Depth	Width
205/75R17.5	1.6mm	5-7mm
215/75R17.5	1.6mm	5-7mm
235/75R17.5	1.6mm	5-7mm
265/70R19.5	1.6mm	5-7mm
285/70R19.5	1.6mm	5-7mm




**MultiRoute
EDR51**

Pattern when new

Pattern when 70% worn

Pattern after regrooved

Size	Dimension Of Regroove	
	Depth	Width
275/80R22.5	2mm	6-8mm
295/60R22.5	2mm	6-8mm
295/80R22.5	2mm	6-8mm
315/70R22.5	2mm	6-8mm
315/80R22.5	2mm	6-8mm




**MultiRoute
ETR31**

Pattern when new

Pattern when 70% worn

Pattern after regrooved

Size	Dimension Of Regroove	
	Depth	Width
385/65R22.5	2mm	6-8mm



**MultiRoute
EG801**


Pattern when new

Pattern when 70% worn

Pattern after regrooved

Size	Dimension Of Regroove	
	Depth	Width
11R22.5	2mm	6-8mm
12R22.5	2mm	6-8mm
13R22.5	2mm	6-8mm
315/80R22.5	2mm	6-8mm

Winter




**Winter
EDW85**

Pattern when new

Pattern when 70% worn

Pattern after regrooved

Size	Dimension Of Regroove	
	Depth	Width
275/70R22.5	2mm	6-8mm
315/70R22.5	2mm	6-8mm



**Winter
EAW86**

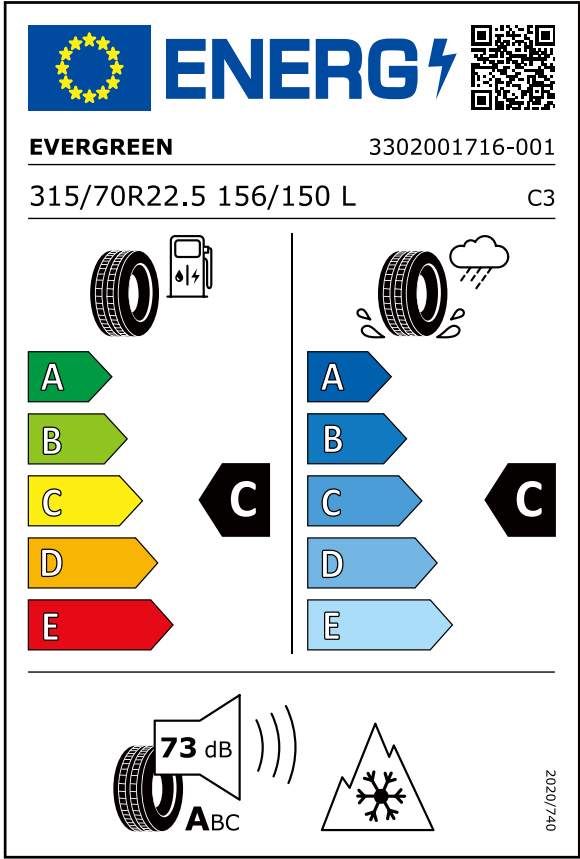
Pattern when new

Pattern when 70% worn

Pattern after regrooved

Size	Dimension Of Regroove	
	Depth	Width
385/65R22.5	2mm	6-8mm

THE EU TYRE LABEL



WHAT DOES THE LABEL TELL YOU?


The truck tyre label gives you details about the manufacturer and internal product code, as well as a description of the tyre size and class.

Tyres are graded on four performance criteria:


- Fuel efficiency
- Wet Grip
- Exterior noise from contact with the road surface
- Snow grip

For fuel efficiency and wet grip, performance is expressed in five classes ranging from: A (the most efficient) to E (the least efficient).

For noise, the value is presented on the label together with the letters A, B, and C (A being lowest noise rating and C is the highest).

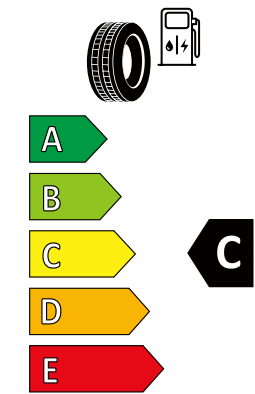
**SNOW GRIP**

When the label has the 3PMSF symbol, it shows that the tyre has passed a regulated, objective test, indicating it has a minimum 25% better snow traction than a Standard Reference Test Tyre (SRTT).

**EXTERIOR NOISE**

Exterior tyre noise levels are split into three categories and measured in decibel (dB) in comparison with the EU Regulative noise levels (ECE117).

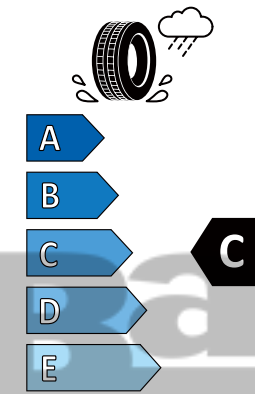
A = 3 dB less than the current EU limit value for this product
B = Compliant with the current EU limit value for this product
C = Non-compliant with the current EU limit value for this product



FUEL EFFICIENCY

Fuel consumption is influenced by the rolling resistance of the tyres caused by tyre deformation when rotating, resulting in energy losses in the form of heat. The higher the deformation, the higher the tyre rolling resistance and consequently the more fuel is required to move the vehicle forward. In other words, lower rolling resistance means lower fuel consumption and therefore lower vehicle emissions, including CO2.

The label displays different “rolling resistance” grades, where A is the most “fuel efficient” and E the least efficient in class. The black arrow next to the grading indicates the performance level of the product. Customers should be made aware that actual fuel savings and road safety depend heavily on the behavior of drivers. It should be noted that environmentally friendly driving can significantly reduce fuel consumption; thus, tyre pressure needs to be correct and regularly checked for optimum fuel efficiency.



WET GRIP

The most important role of a tyre is to provide safety – in all weather conditions. Wet traction or grip is one of the most important performance characteristics of any tire.

There is typically a performance trade-off when combining noise, fuel efficiency and a safety performance like wet grip.

The labelling will allow customers to prioritise for themselves their preferred type of performance.

The label displays a range of five grades, where tyres with an “A” provide the highest levels of wet grip, while “E” provide the lowest.

EVERGREEN TIRE

Add: Building No. 5, Lane 388 Daduhe Road,
Shanghai 200062, China

Tel: (+86) (21) 6295 5670

E-mail: evergreentyre@evergreentyre.com

www.evergreentyre.eu

Version 23.7 EU

